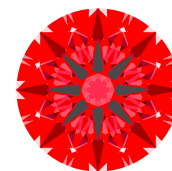




**Light Performance Grade: Exceptional**



**Ideal-Scope representation**

Low Moderate High Superior Exceptional

**Light Performance**

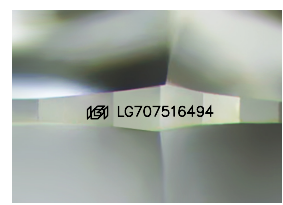


**COLOR**

D E F G H I J Faint Very Light Light

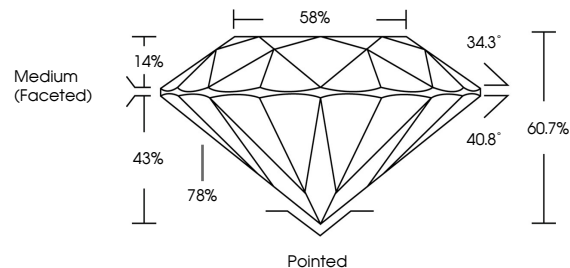
**CLARITY**

IF	VS <sup>1-2</sup>	VS <sup>1-2</sup>	SI <sup>1-2</sup>	I <sup>1-3</sup>
Internally Flawless	Very Very Slightly Included	Very Slightly Included	Slightly Included	Included

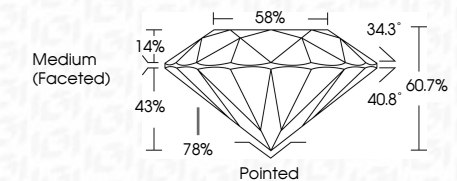


Sample Image Used

**PROPORTIONS**



May 16, 2025  
IGI Report Number **LG707516494**  
Description **LABORATORY GROWN DIAMOND**  
Shape and Cutting Style **ROUND BRILLIANT**  
Measurements **11.18 - 11.21 X 6.80 MM**  
**GRADING RESULTS**  
Carat Weight **5.21 CARATS**  
Color Grade **D**  
Clarity Grade **VS 1**  
Cut Grade **IDEAL**



**ADDITIONAL GRADING INFORMATION**

Polish **EXCELLENT**  
Symmetry **EXCELLENT**  
Fluorescence **NONE**  
Inscription(s) **IGI LG707516494**  
Comments: This Laboratory Grown Diamond was created by Chemical Vapor Deposition (CVD) growth process.  
Type Ila

**ELECTRONIC COPY**

**LABORATORY GROWN DIAMOND REPORT**

May 16, 2025  
IGI Report Number **LG707516494**  
Description **LABORATORY GROWN DIAMOND**  
Shape and Cutting Style **ROUND BRILLIANT**  
Measurements **11.18 - 11.21 x 6.80 mm**

**GRADING RESULTS**

Carat Weight **5.21 CARATS**  
Color Grade **D**  
Clarity Grade **VS 1**  
Cut Grade **IDEAL**

**ADDITIONAL GRADING INFORMATION**

Polish **EXCELLENT**  
Symmetry **EXCELLENT**  
Fluorescence **NONE**  
Inscription(s) **IGI LG707516494**

Comments: This Laboratory Grown Diamond was created by Chemical Vapor Deposition (CVD) growth process.  
Type Ila



IGI Report No. <b>LG707516494</b>	<b>ROUND BRILLIANT</b>	<b>5.21 CARATS</b>	<b>D</b>
<b>11.18 - 11.21 X 6.80 MM</b>			
Carat Weight			
Color Grade			
Clarity Grade			
Cut Grade			
Depth			
Table			
Grade			
Culet			
Polish			
Symmetry			
Fluorescence			
Inscription(s)			
<p>Comments: This Laboratory Grown Diamond was created by Chemical Vapor Deposition (CVD) growth process. Type Ila</p>			

