



**ELECTRONIC COPY**

LG707523080  
Report verification at igi.org



May 21, 2025  
IGI Report Number **LG707523080**  
Description **LABORATORY GROWN DIAMOND**  
Shape and Cutting Style **SQUARE EMERALD CUT**  
Measurements **7.40 X 7.33 X 4.70 MM**  
**GRADING RESULTS**  
Carat Weight **2.37 CARATS**  
Color Grade **E**  
Clarity Grade **INTERNALLY FLAWLESS**

May 21, 2025  
IGI Report Number **LG707523080**  
Description **LABORATORY GROWN DIAMOND**  
Shape and Cutting Style **SQUARE EMERALD CUT**  
Measurements **7.40 X 7.33 X 4.70 MM**

**GRADING RESULTS**

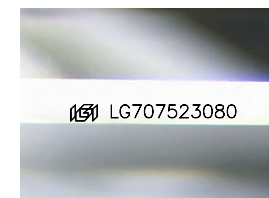
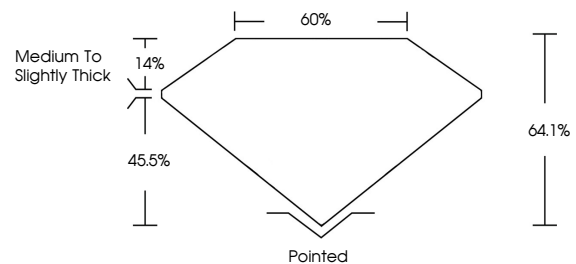
Carat Weight **2.37 CARATS**  
Color Grade **E**  
Clarity Grade **INTERNALLY FLAWLESS**

**ADDITIONAL GRADING INFORMATION**

Polish **EXCELLENT**  
Symmetry **EXCELLENT**  
Fluorescence **NONE**  
Inscription(s) **IGI LG707523080**

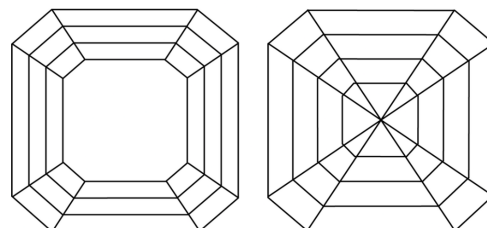
Comments: This Laboratory Grown Diamond was created by Chemical Vapor Deposition (CVD) growth process.  
Type IIa

**PROPORTIONS**



Sample Image Used

**CLARITY CHARACTERISTICS**



**KEY TO SYMBOLS**

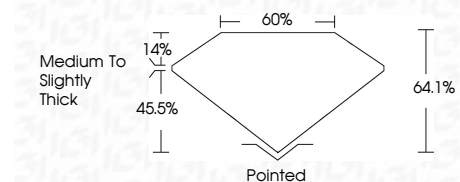
Red symbols indicate internal characteristics.  
Green symbols indicate external characteristics.

**COLOR**

D E F G H I J Faint Very Light Light

**CLARITY**

IF	VS <sup>1-2</sup>	VS <sup>1-2</sup>	SI <sup>1-2</sup>	I <sup>1-3</sup>
Internally Flawless	Very Very Slightly Included	Very Slightly Included	Slightly Included	Included



**ADDITIONAL GRADING INFORMATION**

Polish **EXCELLENT**  
Symmetry **EXCELLENT**  
Fluorescence **NONE**  
Inscription(s) **IGI LG707523080**  
Comments: This Laboratory Grown Diamond was created by Chemical Vapor Deposition (CVD) growth process.  
Type IIa



May 21, 2025  
IGI Report No LG707523080  
**SQUARE EMERALD CUT**  
7.40 X 7.33 X 4.70 MM  
2.37 CARATS  
E  
Color Grade  
Clarity Grade  
Table  
Depth  
Girdle  
Medium to Slightly Thick  
Pointed  
Polish  
Symmetry  
Fluorescence  
Inscription(s)  
**EXCELLENT**  
**EXCELLENT**  
**NONE**  
IGI LG707523080  
Comments: This Laboratory Grown Diamond was created by Chemical Vapor Deposition (CVD) growth process.  
Type IIa