



ELECTRONIC COPY

LG707523457
Report verification at igi.org



May 21, 2025
IGI Report Number LG707523457
Description LABORATORY GROWN DIAMOND
Shape and Cutting Style PRINCESS CUT
Measurements 6.82 X 6.81 X 4.95 MM
GRADING RESULTS
Carat Weight 2.08 CARATS
Color Grade E
Clarity Grade INTERNALLY FLAWLESS
Cut Grade EXCELLENT

LABORATORY GROWN DIAMOND REPORT

May 21, 2025
IGI Report Number LG707523457
Description LABORATORY GROWN DIAMOND
Shape and Cutting Style PRINCESS CUT
Measurements 6.82 X 6.81 X 4.95 MM

GRADING RESULTS

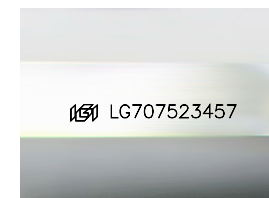
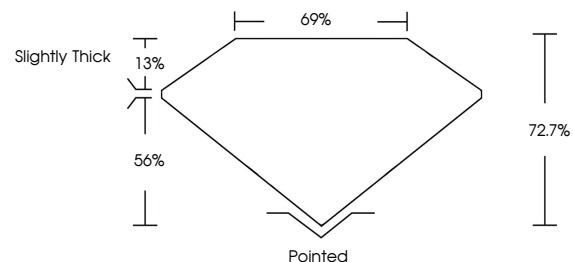
Carat Weight 2.08 CARATS
Color Grade E
Clarity Grade INTERNALLY FLAWLESS
Cut Grade EXCELLENT

ADDITIONAL GRADING INFORMATION

Polish EXCELLENT
Symmetry EXCELLENT
Fluorescence NONE
Inscription(s) IGI LG707523457

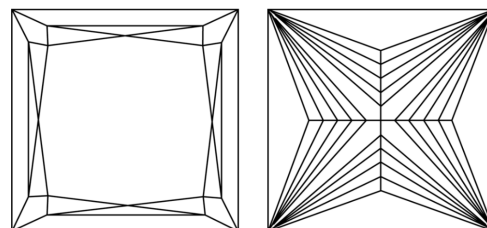
Comments: This Laboratory Grown Diamond was created by Chemical Vapor Deposition (CVD) growth process. Type IIa

PROPORTIONS



Sample Image Used

CLARITY CHARACTERISTICS



KEY TO SYMBOLS

Red symbols indicate internal characteristics.
Green symbols indicate external characteristics.

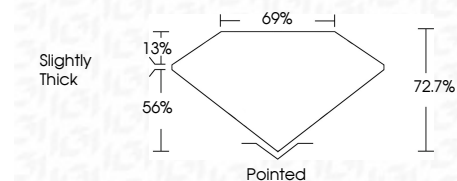
COLOR

D E F G H I J Faint Very Light Light

CLARITY

IF VS 1-2 VS 1-2 SI 1-2 I 1-3

Internally Flawless Very Very Slightly Included Very Slightly Included Slightly Included Included



ADDITIONAL GRADING INFORMATION

Polish EXCELLENT
Symmetry EXCELLENT
Fluorescence NONE
Inscription(s) IGI LG707523457
Comments: This Laboratory Grown Diamond was created by Chemical Vapor Deposition (CVD) growth process. Type IIa



Table with 2 columns: Property and Value. Includes Carat Weight (2.08 CARATS), Color Grade (E), Clarity Grade (EXCELLENT), Depth (72.7%), Table (69%), Girdle (Slightly Thick), Cut (Pointed), Polish (EXCELLENT), Symmetry (EXCELLENT), Fluorescence (NONE), and Inscription(s) (IGI LG707523457).

May 21, 2025
IGI Report No. LG707523457
PRINCESS CUT

Comments: This Laboratory Grown Diamond was created by Chemical Vapor Deposition (CVD) growth process. Type IIa