

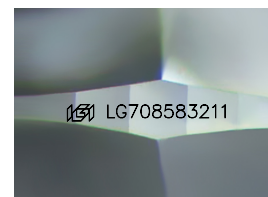
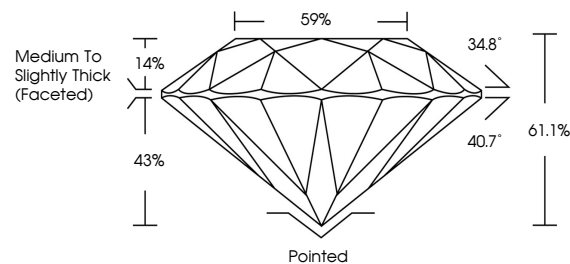


**ELECTRONIC COPY**

## LABORATORY GROWN DIAMOND REPORT

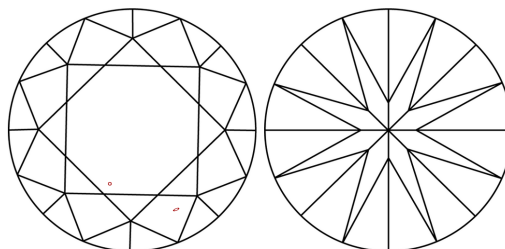
LG708583211  
Report verification at [igi.org](https://igi.org)

## PROPORTIONS



Sample Image Used

## CLARITY CHARACTERISTICS



## KEY TO SYMBOLS

Red symbols indicate internal characteristics.  
Green symbols indicate external characteristics.

## COLOR

D E F G H I J Faint Very Light Light

## CLARITY

IF WS<sup>1-2</sup> VS<sup>1-2</sup> SI<sup>1-2</sup> |<sup>1-3</sup>

Internally Flawless	Very Very Slightly Included	Very Slightly Included	Slightly Included	Included
------------------------	--------------------------------	---------------------------	----------------------	----------

## LABORATORY GROWN DIAMOND REPORT



May 17, 2025

IGI Report Number LG708583211

Description **LABORATORY GROWN DIAMOND**Shape and Cutting Style **ROUND BRILLIANT**

Measurements	8.57 - 8.62 X 5.25 MM
--------------	-----------------------

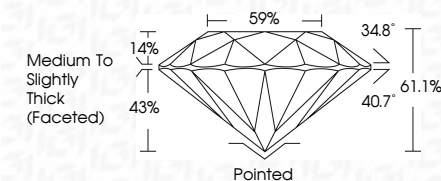
## GRADING RESULTS

Carat Weight **2.42 CARATS**

Color Grade G

Clarity Grade VS 1

Cut Grade **IDEAL**



### ADDITIONAL GRADING INFORMATION

Polish **EXCELLENT**Symmetry **EXCELLENT**Fluorescence **NONE**Inscription(s)  LG708583211

Comments: This Laboratory Grown Diamond was created by Chemical Vapor Deposition (CVD) growth process.  
Type IIa



© IGI 2020, International Gemological Institute

FD - 10 20

**www.igi.org**



THIS DOCUMENT WAS PRODUCED WITH THE FOLLOWING SECURITY MEASURES: SPECIAL DOCUMENT PAPER, INK SCREENS, WATERMARK, BACKGROUND DESIGNS, HOLOGRAM AND OTHER SECURITY FEATURES NOT LISTED AND DO EXCEED DOCUMENT SECURITY INDUSTRY GUIDELINE

May 17, 2026	Color Weight	2.42 CARATS		Pointed	GSI Report No. LG708583211 ROUND BRILLIANT 6.57 - 6.42 X 5.25 MM VS 1 IDEAL 61.1% 59% Medium to Slightly Thick (Faceted)
GI Report No. LG708583211	Color Grade	G		Excellent	
Color	Clarity Grade	Vs 1		Excellent	
Clarity	Depth	61.1%		Excellent	
Depth	Table	59%		None	
Table	Girdle	Medium to Slightly Thick (Faceted)	None	#89 LG708583211  Comments: This Laboratory Grown Diamond was created by Chemical Vapor Deposition (CVD) growth process. Type IIa	
Girdle	Culet				
Culet	Polish				
Polish	Symmetry				
Symmetry	Fluorescence				
Fluorescence	Inscriptions(s)				