

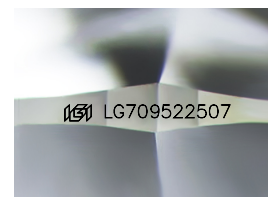
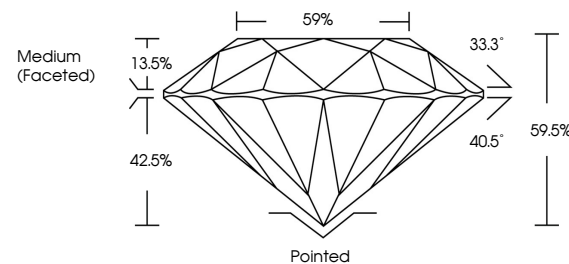


**ELECTRONIC COPY**

## LABORATORY GROWN DIAMOND REPORT

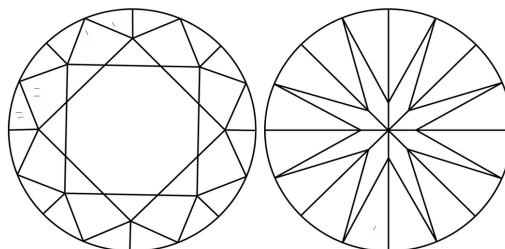
LG709522507  
Report verification at [igi.org](https://igi.org)

## PROPORTIONS



Sample Image Used

## CLARITY CHARACTERISTICS



## KEY TO SYMBOLS

Red symbols indicate internal characteristics.  
Green symbols indicate external characteristics.

## COLOR

D E F G H I J Faint Very Light Light

## CLARITY

IF      WS<sup>1-2</sup>      VS<sup>1-2</sup>      S<sup>1-2</sup>      |<sup>1-3</sup>

Internally Flawless	Very Very Slightly Included	Very Slightly Included	Slightly Included	Included
------------------------	--------------------------------	---------------------------	----------------------	----------



© IGI 2020, International Gemological Institute

FD - 10 20

**www.igi.org**

## LABORATORY GROWN DIAMOND REPORT



June 1, 2025

IGI Report Number **LG709522507**Description **LABORATORY GROWN DIAMOND**Shape and Cutting Style **ROUND BRILLIANT**

Measurements 7.15 - 7.20 X 4.27 MM

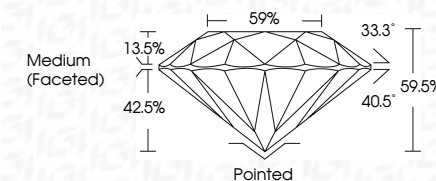
## GRADING RESULTS

Carat Weight 1.34 CARAT

Color Grade D

Clarity Grade WS 2

Cut Grade **IDEAL**



### ADDITIONAL GRADING INFORMATION

Polish **EXCELLENT**Symmetry **EXCELLENT**Fluorescence **NONE**Inscription(s)  LG709522507

Comments: As Grown - No indication of post-growth treatment.

This Laboratory Grown Diamond was created by High Pressure High Temperature (HPHT) growth process.

Type II



June 1, 2026 G Report No LGT0962587	<b>ROUND BRILLIANT</b>	1.14 CARAT D VVS 2 IDEAL 59.5% 57%	<b>Medium (Faceted)</b>	<b>Pinkish EXCELLENT EXCELLENT NONE (#) LGT0962587</b>	<b>Comments: As Seen - No Indication of post-growth treatment. This Laboratory Growth Diamond was created by High Pressure High Temperature (HPHT) growth process.</b> <b>Type II</b>
--	------------------------	---	-------------------------	--	--