



ELECTRONIC COPY

LG710533167 Report verification at igi.org



May 23, 2025

IGI Report Number LG710533167

Description LABORATORY GROWN DIAMOND

Shape and Cutting Style ROUND BRILLIANT

Measurements 10.07 - 10.11 X 6.22 MM

GRADING RESULTS

Carat Weight 3.90 CARATS

Color Grade D

Clarity Grade VS 2

Cut Grade IDEAL

May 23, 2025 IGI Report Number LG710533167 Description LABORATORY GROWN DIAMOND Shape and Cutting Style ROUND BRILLIANT Measurements 10.07 - 10.11 X 6.22 MM

GRADING RESULTS

Carat Weight 3.90 CARATS

Color Grade D

Clarity Grade VS 2

Cut Grade IDEAL

ADDITIONAL GRADING INFORMATION

Polish EXCELLENT

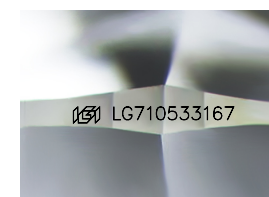
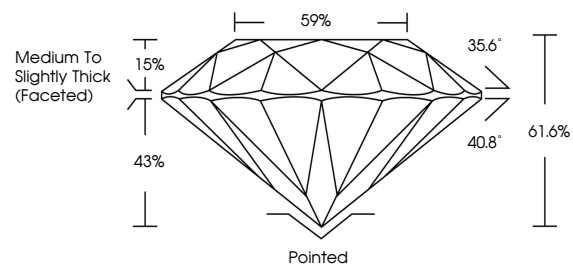
Symmetry EXCELLENT

Fluorescence NONE

Inscription(s) IGI LG710533167

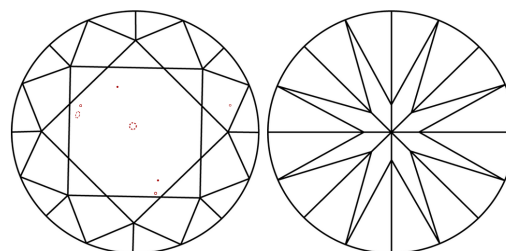
Comments: This Laboratory Grown Diamond was created by Chemical Vapor Deposition (CVD) growth process. Type IIa

PROPORTIONS



Sample Image Used

CLARITY CHARACTERISTICS



KEY TO SYMBOLS

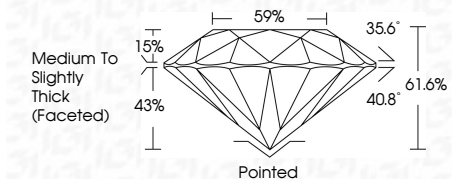
Red symbols indicate internal characteristics. Green symbols indicate external characteristics.

COLOR

D E F G H I J Faint Very Light Light

CLARITY

IF WS 1-2 VS 1-2 SI 1-2 I 1-3 Internally Flawless Very Very Slightly Included Very Slightly Included Slightly Included Included



ADDITIONAL GRADING INFORMATION

Polish EXCELLENT

Symmetry EXCELLENT

Fluorescence NONE

Inscription(s) IGI LG710533167

Comments: This Laboratory Grown Diamond was created by Chemical Vapor Deposition (CVD) growth process. Type IIa



IGI



May 23, 2025 IGI Report No LG710533167 ROUND BRILLIANT 10.07 - 10.11 X 6.22 MM 3.90 CARATS D VS 2 IDEAL 61.6% 59% Medium To Slightly Thick (Faceted) Pointed EXCELLENT EXCELLENT NONE IGI LG710533167 Comments: This Laboratory Grown Diamond was created by Chemical Vapor Deposition (CVD) growth process. Type IIa