



**ELECTRONIC COPY**

LG710534436  
Report verification at igi.org



May 30, 2025

IGI Report Number **LG710534436**

Description **LABORATORY GROWN DIAMOND**

Shape and Cutting Style **PEAR ROSE CUT**

Measurements **13.25 X 10.67 X 6.02 MM**

**GRADING RESULTS**

Carat Weight **5.82 CARATS**

Color Grade **E**

Clarity Grade **VVS 2**

**LABORATORY GROWN DIAMOND REPORT**

May 30, 2025

IGI Report Number **LG710534436**

Description **LABORATORY GROWN DIAMOND**

Shape and Cutting Style **PEAR ROSE CUT**

Measurements **13.25 X 10.67 X 6.02 MM**

**GRADING RESULTS**

Carat Weight **5.82 CARATS**

Color Grade **E**

Clarity Grade **VVS 2**

**ADDITIONAL GRADING INFORMATION**

Polish **EXCELLENT**

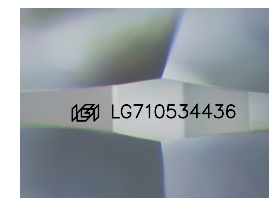
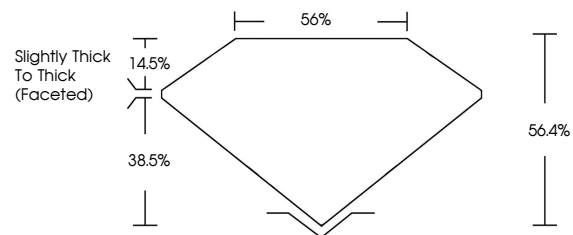
Symmetry **EXCELLENT**

Fluorescence **NONE**

Inscription(s) **IGI LG710534436**

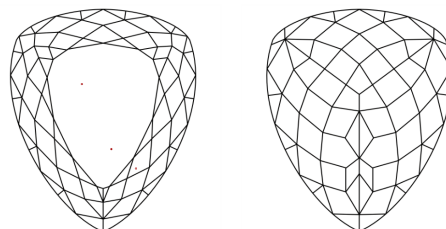
Comments: This Laboratory Grown Diamond was created by Chemical Vapor Deposition (CVD) growth process. Type IIa

**PROPORTIONS**



Sample Image Used

**CLARITY CHARACTERISTICS**



**KEY TO SYMBOLS**

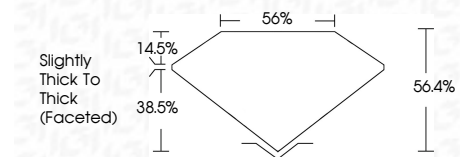
Red symbols indicate internal characteristics.  
Green symbols indicate external characteristics.

**COLOR**

D E F G H I J Faint Very Light Light

**CLARITY**

IF	VS <sup>1-2</sup>	VS <sup>1-2</sup>	SI <sup>1-2</sup>	I <sup>1-3</sup>
Internally Flawless	Very Very Slightly Included	Very Slightly Included	Slightly Included	Included



**ADDITIONAL GRADING INFORMATION**

Polish **EXCELLENT**

Symmetry **EXCELLENT**

Fluorescence **NONE**

Inscription(s) **IGI LG710534436**

Comments: This Laboratory Grown Diamond was created by Chemical Vapor Deposition (CVD) growth process. Type IIa



**IGI**



May 30, 2025  
IGI Report No LG710534436  
**PEAR ROSE CUT**

13.25 X 10.67 X 6.02 MM  
5.82 CARATS  
E  
VVS 2  
56.4%  
38.5%  
Slightly Thick To Thick (Faceted)

EXCELLENT  
EXCELLENT  
NONE  
IGI LG710534436

Comments: This Laboratory Grown Diamond was created by Chemical Vapor Deposition (CVD) growth process. Type IIa