



**ELECTRONIC COPY**

## LABORATORY GROWN DIAMOND REPORT

|                         |                            |
|-------------------------|----------------------------|
| May 21, 2025            |                            |
| IGI Report Number       | LG710540011                |
| Description             | LABORATORY GROWN DIAMOND   |
| Shape and Cutting Style | CUSHION MODIFIED BRILLIANT |
| Measurements            | 10.39 X 7.53 X 5.01 MM     |

## GRADING RESULTS

|               |             |
|---------------|-------------|
| Carat Weight  | 3.09 CARATS |
| Color Grade   | G           |
| Clarity Grade | VS 2        |

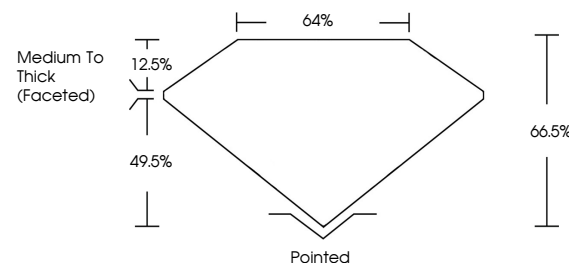
### ADDITIONAL GRADING INFORMATION

|                |                |
|----------------|----------------|
| Polish         | EXCELLENT      |
| Symmetry       | EXCELLENT      |
| Fluorescence   | NONE           |
| Inscription(s) | 15 LG710540011 |

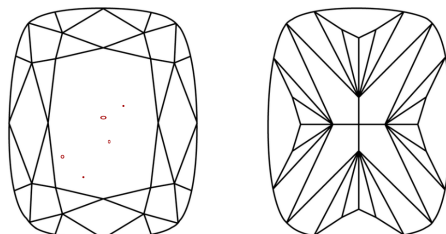
Comments: This Laboratory Grown Diamond was created by Chemical Vapor Deposition (CVD) growth process.  
Type IIa

LG710540011  
Report verification at [igi.org](https://www.igi.org)

## PROPORTIONS

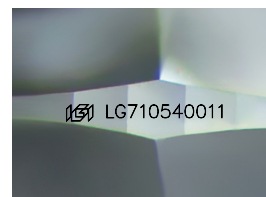


## CLARITY CHARACTERISTICS



## KEY TO SYMBOLS

Red symbols indicate internal characteristics.  
Green symbols indicate external characteristics.



Sample Image Used

## COLOR

D E F G H I J Faint Very Light Light

## CLARITY

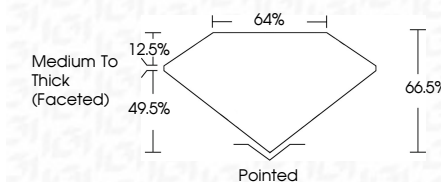
IF      VWS<sup>1-2</sup>      VS<sup>1-2</sup>      SI<sup>1-2</sup>      I<sup>1-3</sup>

| Internally<br>Flawless | Very Very<br>Slightly Included | Very<br>Slightly Included | Slightly<br>Included | Included |
|------------------------|--------------------------------|---------------------------|----------------------|----------|
|------------------------|--------------------------------|---------------------------|----------------------|----------|

## LABORATORY GROWN DIAMOND REPORT



|                         |                               |
|-------------------------|-------------------------------|
| May 21, 2025            |                               |
| IGI Report Number       | LG710540011                   |
| Description             | LABORATORY GROWN DIAMOND      |
| Shape and Cutting Style | CUSHION MODIFIED<br>BRILLIANT |
| Measurements            | 10.39 X 7.53 X 5.01 MM        |
| GRADING RESULTS         |                               |
| Carat Weight            | 3.09 CARATS                   |
| Color Grade             | G                             |
| Clarity Grade           | VS 2                          |



### ADDITIONAL GRADING INFORMATION

|   |   |
|---|---|
| Polish  | EXCELLENT   |
| Symmetry  | EXCELLENT   |
| Fluorescence  | NONE  |
| Inscription(s)  |  LG710540011 |
| <p>Comments: This Laboratory Grown Diamond was created by Chemical Vapor Deposition (CVD) growth process.</p> <p>Type IIa</p> |   |



© IGI 2020, International Gemological Institute

FD - 10 20



THIS DOCUMENT WAS PRODUCED WITH THE FOLLOWING SECURITY MEASURES: SPECIAL DOCUMENT PAPER, INK SCREENS, WATERMARK, BACKGROUND DESIGNS, HOLOGRAM AND OTHER SECURITY FEATURES NOT LISTED AND DO EXCEED DOCUMENT SECURITY INDUSTRY GUIDELINES

**www.igi.org**

May 21, 2025  
GI Report No L  
CUSHION MODI

|                        |                              |                |
|------------------------|------------------------------|----------------|
| 10.99 X 7.55 X 5.01 MM | 3.09 CARATS                  |                |
| Carat Weight           |                              |                |
| Color Grade            |                              |                |
| Clarity Grade          | VS 2                         |                |
| Depth                  | 66.0%                        |                |
| Table                  | 64%                          |                |
| Grade                  | Medium to Thick<br>(Faceted) |                |
| Culet                  | Pointed                      |                |
| Polish                 | EXCELLENT                    |                |
| Symmetry               | EXCELLENT                    |                |
| Fluorescence           | NONE                         |                |
| Report Number(s)       |                              | 44412710649011 |

**Comments:**  
This Laboratory Grown Diamond was  
created by Chemical Vapor Deposition  
(CVD) growth process.