

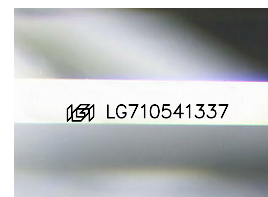
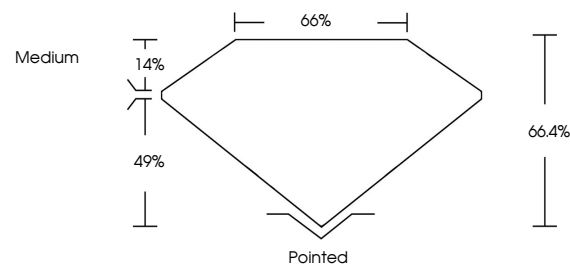


ELECTRONIC COPY

LABORATORY GROWN DIAMOND REPORT

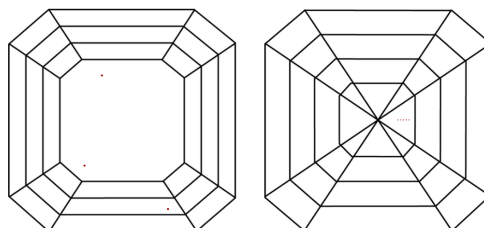
LG710541337
Report verification at igi.org

PROPORTIONS



Sample Image Used

CLARITY CHARACTERISTICS



KEY TO SYMBOLS

Red symbols indicate internal characteristics.
Green symbols indicate external characteristics.

COLOR

D E F G H I J Faint Very Light Light

CLARITY

IF VWS¹⁻² VS¹⁻² SI¹⁻² I¹⁻³

Internally Flawless	Very Very Slightly Included	Very Slightly Included	Slightly Included	Included
------------------------	--------------------------------	---------------------------	----------------------	----------

LABORATORY GROWN DIAMOND REPORT



May 28, 2025

IGI Report Number **LG710541337**Description **LABORATORY GROWN DIAMOND**

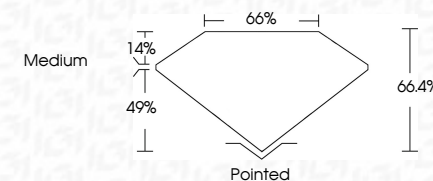
Shape and Cutting Style **SQUARE EMERALD CUT**

Measurements 12.68 X 12.64 X 8.39 MM

GRADING RESULTS

Carat Weight **12.32 CARATS**

Color Grade	D
-------------	---

Clarity Grade **VVS 2**

ADDITIONAL GRADING INFORMATION

Polish **EXCELLENT**Symmetry **EXCELLENT**Fluorescence **NONE**Inscription(s) LG710541337

Comments: This Laboratory Grown Diamond was created by Chemical Vapor Deposition (CVD) growth process.
Type IIa



© IGI 2020, International Gemological Institute

FD - 10 20



THIS DOCUMENT WAS PRODUCED WITH THE FOLLOWING SECURITY MEASURES: SPECIAL DOCUMENT PAPER, INK SCREENS, WATERMARK, BACKGROUND DESIGNS, HOLOGRAM AND OTHER SECURITY FEATURES NOT LISTED AND DO EXCEED DOCUMENT SECURITY INDUSTRY GUIDELINES

www.igi.org



May 28, 2025

12.68 X 12.64 X 8.39 MM	12.32 CARATS
Carat Weight	D
Color Grade	VVS 2
Clarity Grade	66.4%
Depth	66%
Table	Medium
Girdle	Pointed
Quiet	EXCELLENT
Polish	EXCELLENT
Symmetry	NONE
Fluorescence	
Production	

Comments:
This Laboratory Grown Diamond was
created by Chemical Vapor Deposition
(CVD) growth process.