



ELECTRONIC COPY

LG710545865 Report verification at igi.org



June 6, 2025 IGI Report Number LG710545865 Description LABORATORY GROWN DIAMOND Shape and Cutting Style CUSHION MODIFIED BRILLIANT Measurements 10.77 X 7.54 X 4.76 MM GRADING RESULTS Carat Weight 3.62 CARATS Color Grade F Clarity Grade VVS 1

June 6, 2025 IGI Report Number LG710545865 Description LABORATORY GROWN DIAMOND Shape and Cutting Style CUSHION MODIFIED BRILLIANT Measurements 10.77 X 7.54 X 4.76 MM

GRADING RESULTS

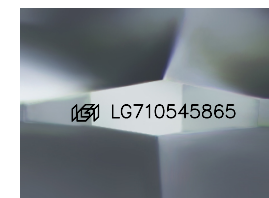
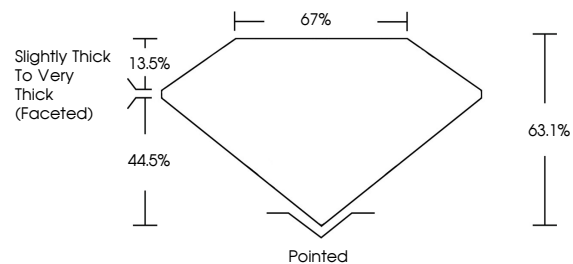
Carat Weight 3.62 CARATS Color Grade F Clarity Grade VVS 1

ADDITIONAL GRADING INFORMATION

Polish EXCELLENT Symmetry EXCELLENT Fluorescence NONE Inscription(s) IGI LG710545865

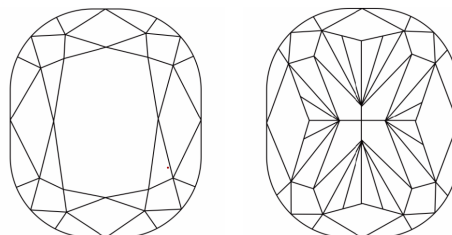
Comments: This Laboratory Grown Diamond was created by Chemical Vapor Deposition (CVD) growth process. Type IIa

PROPORTIONS



Sample Image Used

CLARITY CHARACTERISTICS



KEY TO SYMBOLS

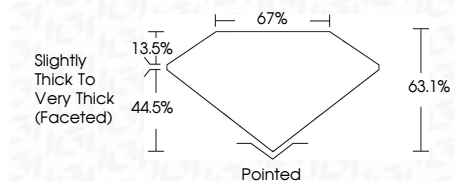
Red symbols indicate internal characteristics. Green symbols indicate external characteristics.

COLOR

D E F G H I J Faint Very Light Light

CLARITY

IF VVS 1-2 VS 1-2 SI 1-2 I 1-3 Internally Flawless Very Very Slightly Included Very Slightly Included Slightly Included Included



ADDITIONAL GRADING INFORMATION

Polish EXCELLENT Symmetry EXCELLENT Fluorescence NONE Inscription(s) IGI LG710545865 Comments: This Laboratory Grown Diamond was created by Chemical Vapor Deposition (CVD) growth process. Type IIa



June 6, 2025 IGI Report No LG710545865 CUSHION MODIFIED BRILLIANT 10.77 X 7.54 X 4.76 MM 3.62 CARATS F VVS 1 63.1% 67% Slightly Thick To Very Thick (Faceted) Pointed EXCELLENT EXCELLENT NONE NONE IGI LG710545865 Comments: This Laboratory Grown Diamond was created by Chemical Vapor Deposition (CVD) growth process. Type IIa