



INTERNATIONAL GEMOLOGICAL INSTITUTE

ELECTRONIC COPY

LABORATORY GROWN DIAMOND REPORT

May 22, 2025
IGI Report Number **LG710562838**
Description **LABORATORY GROWN DIAMOND**
Shape and Cutting Style **PRINCESS CUT**
Measurements **5.53 X 5.44 X 3.89 MM**

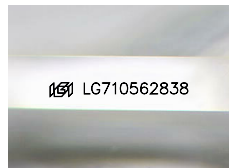
GRADING RESULTS

Carat Weight **0.99 CARAT**
Color Grade **E**
Clarity Grade **SI 1**

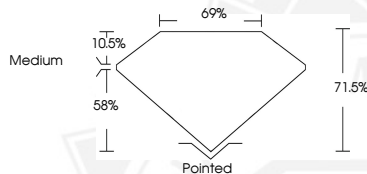
ADDITIONAL GRADING INFORMATION

Polish **EXCELLENT**
Symmetry **EXCELLENT**
Fluorescence **NONE**
Inscription(s) **IGI LG710562838**

Comments: This Laboratory Grown Diamond was created by Chemical Vapor Deposition (CVD) growth process. Type IIa



Sample Image Used



May 22, 2025
IGI Report Number **LG710562838**
PRINCESS CUT
LABORATORY GROWN DIAMOND
5.53 X 5.44 X 3.89 MM
Carat Weight **0.99 CARAT**
Color Grade **E**
Clarity Grade **SI 1**
Polish **EXCELLENT**
Symmetry **EXCELLENT**
Fluorescence **NONE**
Inscription(s) **IGI LG710562838**
Comments: This Laboratory Grown Diamond was created by Chemical Vapor Deposition (CVD) growth process. Type IIa



May 22, 2025
IGI Report Number **LG710562838**
PRINCESS CUT
LABORATORY GROWN DIAMOND
5.53 X 5.44 X 3.89 MM
Carat Weight **0.99 CARAT**
Color Grade **E**
Clarity Grade **SI 1**
Polish **EXCELLENT**
Symmetry **EXCELLENT**
Fluorescence **NONE**
Inscription(s) **IGI LG710562838**
Comments: This Laboratory Grown Diamond was created by Chemical Vapor Deposition (CVD) growth process. Type IIa



THIS DOCUMENT WAS PRODUCED WITH THE FOLLOWING SECURITY MEASURES: SPECIAL DOCUMENT PAPER, INK SCREENS, WATERMARK, BACKGROUND DESIGNS, HOLOGRAM AND OTHER SECURITY FEATURES NOT LISTED AND DO EXCEED DOCUMENT SECURITY INDUSTRY GUIDELINES.

For terms & conditions and to verify this report, please visit www.igi.org