



ELECTRONIC COPY

LG710582960
Report verification at igi.org



May 24, 2025

IGI Report Number **LG710582960**

Description **LABORATORY GROWN DIAMOND**

Shape and Cutting Style **PRINCESS CUT**

Measurements **5.41 X 5.36 X 4.03 MM**

GRADING RESULTS

Carat Weight **1.07 CARAT**

Color Grade **F**

Clarity Grade **VVS 1**

May 24, 2025
IGI Report Number **LG710582960**
Description **LABORATORY GROWN DIAMOND**
Shape and Cutting Style **PRINCESS CUT**
Measurements **5.41 X 5.36 X 4.03 MM**

GRADING RESULTS

Carat Weight **1.07 CARAT**

Color Grade **F**

Clarity Grade **VVS 1**

ADDITIONAL GRADING INFORMATION

Polish **EXCELLENT**

Symmetry **EXCELLENT**

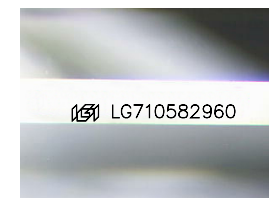
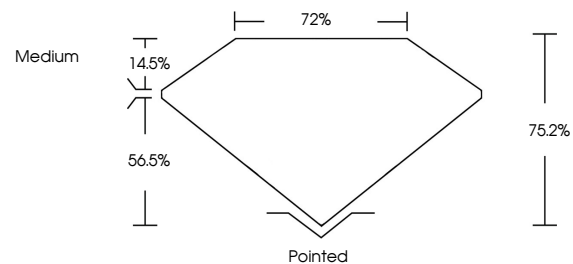
Fluorescence **NONE**

Inscription(s) **IGI LG710582960**

Comments: As Grown - No indication of post-growth treatment.

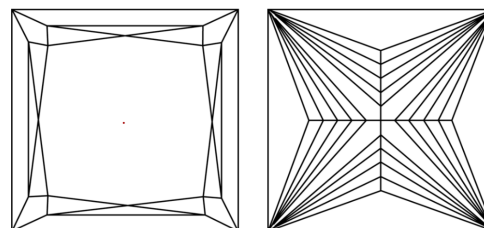
This Laboratory Grown Diamond was created by High Pressure High Temperature (HPHT) growth process. Type II

PROPORTIONS



Sample Image Used

CLARITY CHARACTERISTICS



KEY TO SYMBOLS

Red symbols indicate internal characteristics.
Green symbols indicate external characteristics.

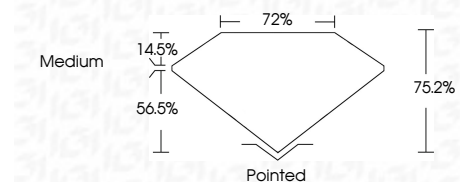
COLOR

D E F G H I J Faint Very Light Light

CLARITY

IF WS¹⁻² VS¹⁻² SI¹⁻² I¹⁻³

Internally Flawless Very Very Slightly Included Very Slightly Included Slightly Included Included



ADDITIONAL GRADING INFORMATION

Polish **EXCELLENT**

Symmetry **EXCELLENT**

Fluorescence **NONE**

Inscription(s) **IGI LG710582960**

Comments: As Grown - No indication of post-growth treatment.

This Laboratory Grown Diamond was created by High Pressure High Temperature (HPHT) growth process. Type II



IGI



May 24, 2025	1.07 CARAT	F	VVS 1	75.2%	72%	Medium	Pointed
IGI Report No LG710582960	1.07 CARAT	F	VVS 1	75.2%	72%	Medium	Pointed
PRINCESS CUT	1.07 CARAT	F	VVS 1	75.2%	72%	Medium	Pointed
5.41 X 5.36 X 4.03 MM	1.07 CARAT	F	VVS 1	75.2%	72%	Medium	Pointed
Carat Weight	1.07 CARAT	F	VVS 1	75.2%	72%	Medium	Pointed
Color Grade	1.07 CARAT	F	VVS 1	75.2%	72%	Medium	Pointed
Clarity Grade	1.07 CARAT	F	VVS 1	75.2%	72%	Medium	Pointed
Depth	1.07 CARAT	F	VVS 1	75.2%	72%	Medium	Pointed
Table	1.07 CARAT	F	VVS 1	75.2%	72%	Medium	Pointed
Girdle	1.07 CARAT	F	VVS 1	75.2%	72%	Medium	Pointed
Culet	1.07 CARAT	F	VVS 1	75.2%	72%	Medium	Pointed
Polish	1.07 CARAT	F	VVS 1	75.2%	72%	Medium	Pointed
Symmetry	1.07 CARAT	F	VVS 1	75.2%	72%	Medium	Pointed
Fluorescence	1.07 CARAT	F	VVS 1	75.2%	72%	Medium	Pointed
Inscription(s)	1.07 CARAT	F	VVS 1	75.2%	72%	Medium	Pointed
IGI LG710582960	1.07 CARAT	F	VVS 1	75.2%	72%	Medium	Pointed

Comments: As Grown - No indication of post-growth treatment.
This Laboratory Grown Diamond was created by High Pressure High Temperature (HPHT) growth process. Type II