

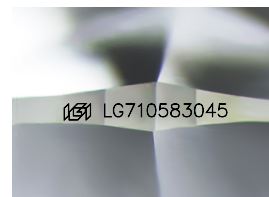
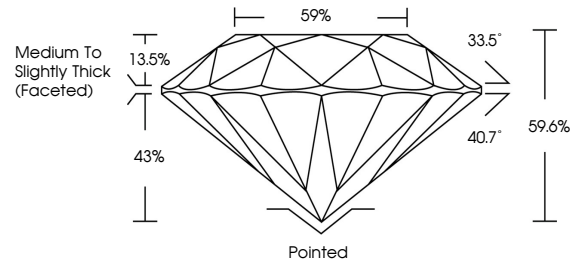


**INTERNATIONAL
GEMOLOGICAL
INSTITUTE**

ELECTRONIC COPY

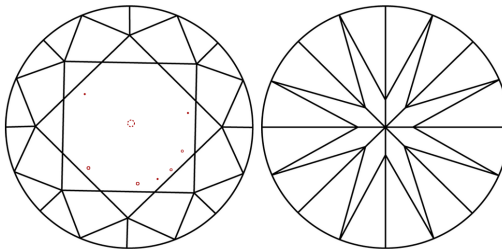
LG710583045
Report verification at igi.org

PROPORTIONS



Sample Image Used

CLARITY CHARACTERISTICS



KEY TO SYMBOLS

Red symbols indicate internal characteristics.
Green symbols indicate external characteristics.

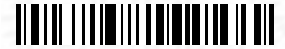
COLOR

D E F G H I J Faint Very Light Light

CLARITY

IF WS¹⁻² VS¹⁻² SI¹⁻² I¹⁻³

| | | | | |
|------------------------|--------------------------------|---------------------------|----------------------|----------|
| Internally Flawless | Very Very Slightly Included | Very Slightly Included | Slightly Included | Included |
|------------------------|--------------------------------|---------------------------|----------------------|----------|



May 26, 2025

IGI Report Number **LG710583045**

| | |
|-------------|--------------------------|
| Description | LABORATORY GROWN DIAMOND |
|-------------|--------------------------|

Shape and Cutting Style **ROUND BRILLIANT**

| | |
|--------------|-------------------------|
| Measurements | 11.85 - 11.90 X 7.08 MM |
|--------------|-------------------------|

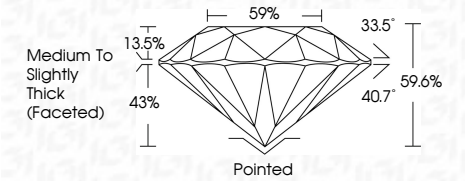
GRADING RESULTS

Carat Weight **6.09 CARATS**

Color Grade D

Clarity Grade VS 2

Cut Grade **IDEAL**



ADDITIONAL GRADING INFORMATION

Polish **EXCELLENT**Symmetry **EXCELLENT**Fluorescence **NONE**Inscription(s) LG710583045

Comments: This Laboratory Grown Diamond was created by Chemical Vapor Deposition (CVD) growth process.
Type IIa



IGI



© IGI 2020, International Gemological Institute

FD - 10 20



THIS DOCUMENT WAS PRODUCED WITH THE FOLLOWING SECURITY MEASURES: SPECIAL DOCUMENT PAPER, INK SCREENS, WATERMARK BACKGROUND DESIGNS, HOLOGRAM AND OTHER SECURITY FEATURES NOT LISTED AND DO EXCEED DOCUMENT SECURITY INDUSTRY GUIDELINES.

www.igi.org

| | |
|--|------------------------------------|
| May 26, 2025 | |
| IGL Report No. LG71068045 | |
| ROUND REPORT | |
| 11.85 - 11.90 X 7.08 MM | 6.09 CARATS |
| Carat Weight | D |
| Color Grade | Vs2 |
| Clarity Grade | IDEAL |
| Cut Grade | 59.5% |
| Depth | 59% |
| Table | Medium to Slightly Thick (Faceted) |
| Girdle | Pointed |
| Culet | EXCELLENT |
| Polish | EXCELLENT |
| Symmetry | EXCELLENT |
| Fluorescence (assignments) | NONE |
| | #61 LG71068045 |
| Comments: | |
| This Laboratory Grown Diamond was created by Chemical Vapor Deposition (CVD) growth process. | |
| Type IId | |