



ELECTRONIC COPY

LG710590680 Report verification at igi.org



June 18, 2025 IGI Report Number LG710590680 Description LABORATORY GROWN DIAMOND Shape and Cutting Style CUT CORNERED RECTANGULAR MODIFIED BRILLIANT Measurements 7.39 X 5.24 X 3.32 MM GRADING RESULTS Carat Weight 1.09 CARAT Color Grade FANCY VIVID BLUE Clarity Grade VS 1

June 18, 2025 IGI Report Number LG710590680 Description LABORATORY GROWN DIAMOND Shape and Cutting Style CUT CORNERED RECTANGULAR MODIFIED BRILLIANT Measurements 7.39 X 5.24 X 3.32 MM

GRADING RESULTS

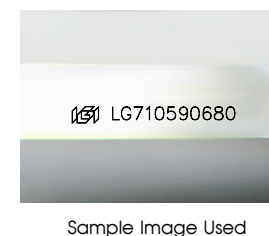
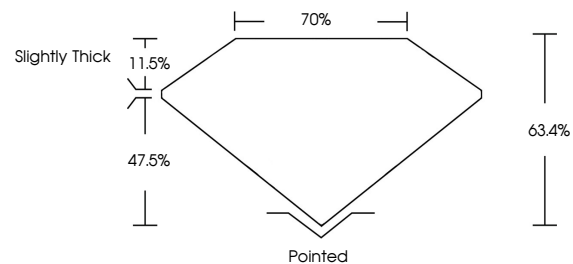
Carat Weight 1.09 CARAT Color Grade FANCY VIVID BLUE Clarity Grade VS 1

ADDITIONAL GRADING INFORMATION

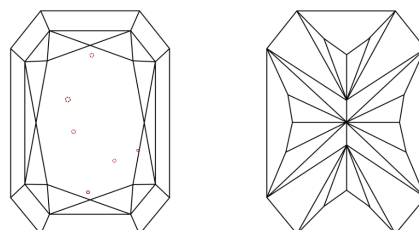
Polish EXCELLENT Symmetry EXCELLENT Fluorescence NONE Inscription(s) LG710590680

Comments: This Laboratory Grown Diamond was created by Chemical Vapor Deposition (CVD) growth process. Indications of post-growth treatment.

PROPORTIONS



CLARITY CHARACTERISTICS



KEY TO SYMBOLS

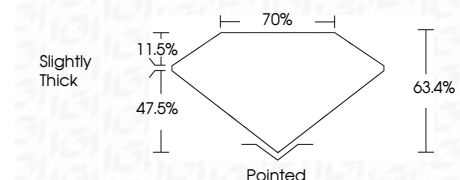
Red symbols indicate internal characteristics. Green symbols indicate external characteristics.

COLOR

D E F G H I J Faint Very Light Light

CLARITY

IF VS 1-2 VS 1-2 SI 1-2 I 1-3 Internally Flawless Very Very Slightly Included Very Slightly Included Slightly Included Included



ADDITIONAL GRADING INFORMATION

Polish EXCELLENT Symmetry EXCELLENT Fluorescence NONE Inscription(s) LG710590680 Comments: This Laboratory Grown Diamond was created by Chemical Vapor Deposition (CVD) growth process. Indications of post-growth treatment.



June 18, 2025 IGI Report No LG710590680 CUT CORNERED RECT. MODIFIED BRILLIANT 7.39 X 5.24 X 3.32 MM 1.09 CARAT FANCY VIVID BLUE VS 1 68.4% 70% Slightly Thick Pointed EXCELLENT EXCELLENT NONE NONE LG710590680 Comments: This Laboratory Grown Diamond was created by Chemical Vapor Deposition (CVD) growth process. Indications of post-growth treatment.