



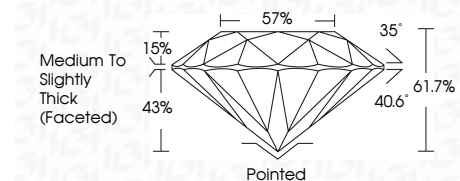
ELECTRONIC COPY

LG711505067 Report verification at igi.org



May 27, 2025 IGI Report Number LG711505067 Description LABORATORY GROWN DIAMOND Shape and Cutting Style ROUND BRILLIANT Measurements 8.73 - 8.79 X 5.40 MM

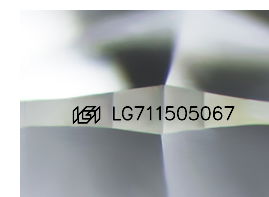
GRADING RESULTS Carat Weight 2.56 CARATS Color Grade D Clarity Grade VS 2 Cut Grade IDEAL



ADDITIONAL GRADING INFORMATION Polish EXCELLENT Symmetry EXCELLENT Fluorescence NONE Inscription(s) LG711505067 Comments: HEARTS & ARROWS This Laboratory Grown Diamond was created by Chemical Vapor Deposition (CVD) growth process. Type IIa

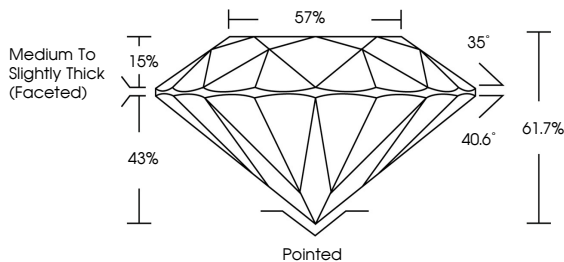


May 27, 2025 IGI Report No LG711505067 ROUND BRILLIANT 8.73 - 8.79 X 5.40 MM 2.56 CARATS D VS 2 IDEAL 61.7% 57% Medium To Slightly Thick (Faceted) Pointed EXCELLENT EXCELLENT NONE LG711505067 Comments: HEARTS & ARROWS This Laboratory Grown Diamond was created by Chemical Vapor Deposition (CVD) growth process. Type IIa

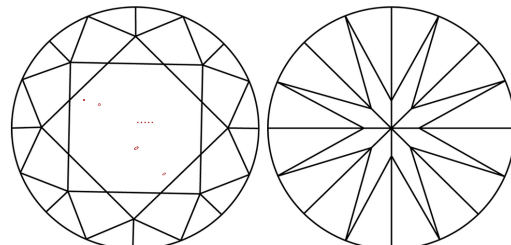


Sample Image Used

PROPORTIONS



CLARITY CHARACTERISTICS



KEY TO SYMBOLS Red symbols indicate internal characteristics. Green symbols indicate external characteristics.



COLOR

Color scale table with categories D, E, F, G, H, I, J, Faint, Very Light, Light

CLARITY

Clarity scale table with categories IF, VS 1-2, VS 1-2, SI 1-2, I 1-3, Internally Flawless, Very Very Slightly Included, Very Slightly Included, Slightly Included, Included



May 27, 2025 IGI Report Number LG711505067 Description LABORATORY GROWN DIAMOND Shape and Cutting Style ROUND BRILLIANT Measurements 8.73 - 8.79 X 5.40 MM

GRADING RESULTS Carat Weight 2.56 CARATS Color Grade D Clarity Grade VS 2 Cut Grade IDEAL

ADDITIONAL GRADING INFORMATION Polish EXCELLENT Symmetry EXCELLENT Fluorescence NONE Inscription(s) LG711505067

Comments: HEARTS & ARROWS This Laboratory Grown Diamond was created by Chemical Vapor Deposition (CVD) growth process. Type IIa