



ELECTRONIC COPY

LG711523067 Report verification at igi.org



May 28, 2025 IGI Report Number LG711523067 Description LABORATORY GROWN DIAMOND Shape and Cutting Style SQUARE CUSHION MODIFIED BRILLIANT Measurements 8.94 X 8.79 X 5.83 MM GRADING RESULTS Carat Weight 3.52 CARATS Color Grade E Clarity Grade VS 1

LABORATORY GROWN DIAMOND REPORT

May 28, 2025 IGI Report Number LG711523067 Description LABORATORY GROWN DIAMOND Shape and Cutting Style SQUARE CUSHION MODIFIED BRILLIANT Measurements 8.94 X 8.79 X 5.83 MM

GRADING RESULTS

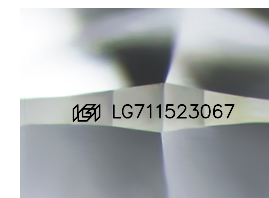
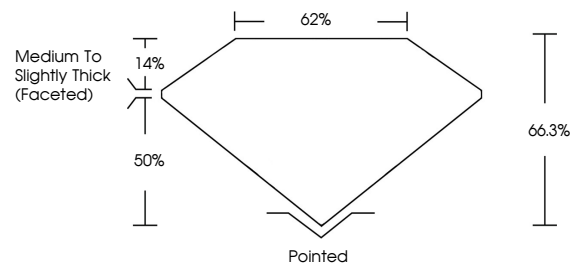
Carat Weight 3.52 CARATS Color Grade E Clarity Grade VS 1

ADDITIONAL GRADING INFORMATION

Polish EXCELLENT Symmetry EXCELLENT Fluorescence NONE Inscription(s) LG711523067

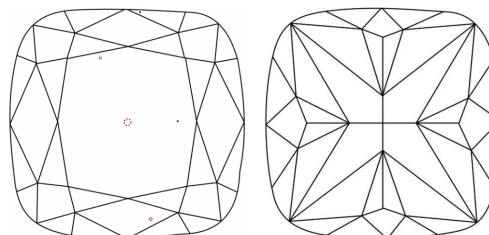
Comments: This Laboratory Grown Diamond was created by Chemical Vapor Deposition (CVD) growth process. Type IIa

PROPORTIONS



Sample Image Used

CLARITY CHARACTERISTICS



KEY TO SYMBOLS

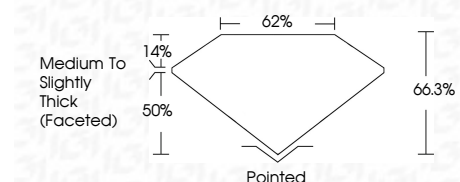
Red symbols indicate internal characteristics. Green symbols indicate external characteristics.

COLOR

D E F G H I J Faint Very Light Light

CLARITY

IF WS 1-2 VS 1-2 SI 1-2 I 1-3 Internally Flawless Very Very Slightly Included Very Slightly Included Slightly Included Included



ADDITIONAL GRADING INFORMATION

Polish EXCELLENT Symmetry EXCELLENT Fluorescence NONE Inscription(s) LG711523067 Comments: This Laboratory Grown Diamond was created by Chemical Vapor Deposition (CVD) growth process. Type IIa



May 28, 2025 IGI Report No LG711523067 SQUARE CUSHION MODIFIED BRILLIANT 8.94 X 8.79 X 5.83 MM 3.52 CARATS E VS 1 66.3% 62% Medium to Slightly Thick (Faceted) Pointed EXCELLENT EXCELLENT NONE NONE LG711523067 Comments: This Laboratory Grown Diamond was created by Chemical Vapor Deposition (CVD) growth process. Type IIa