



**ELECTRONIC COPY**

LG711530007  
Report verification at igi.org



May 28, 2025

IGI Report Number **LG711530007**

Description **LABORATORY GROWN DIAMOND**

Shape and Cutting Style **PRINCESS CUT**

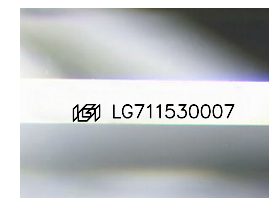
Measurements **9.29 X 9.11 X 6.56 MM**

**GRADING RESULTS**

Carat Weight **5.01 CARATS**

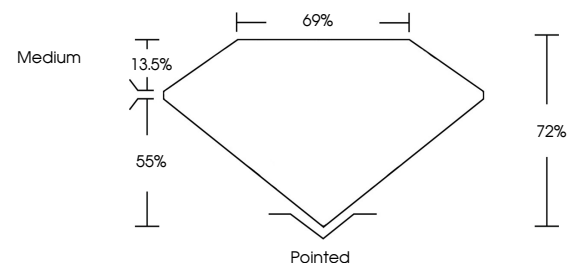
Color Grade **D**

Clarity Grade **VS 1**

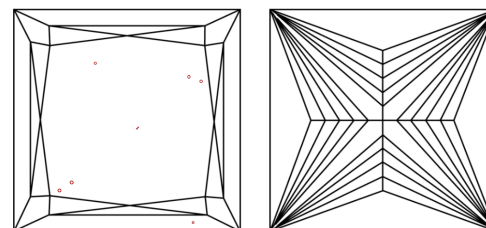


Sample Image Used

**PROPORTIONS**



**CLARITY CHARACTERISTICS**



**KEY TO SYMBOLS**

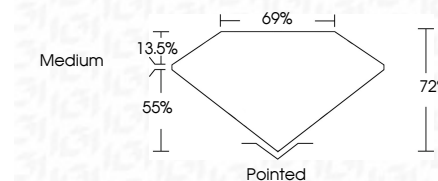
Red symbols indicate internal characteristics.  
Green symbols indicate external characteristics.

**COLOR**

D E F G H I J Faint Very Light Light

**CLARITY**

IF	VS <sup>1-2</sup>	VS <sup>1-2</sup>	SI <sup>1-2</sup>	I <sup>1-3</sup>
Internally Flawless	Very Very Slightly Included	Very Slightly Included	Slightly Included	Included



**ADDITIONAL GRADING INFORMATION**

Polish **EXCELLENT**

Symmetry **EXCELLENT**

Fluorescence **NONE**

Inscription(s) **IGI LG711530007**

Comments: This Laboratory Grown Diamond was created by Chemical Vapor Deposition (CVD) growth process. Type IIa



**IGI**



May 28, 2025  
IGI Report No LG711530007  
PRINCESS CUT

5.01 CARATS  
D

9.29 X 9.11 X 6.56 MM  
Color Grade D  
Clarity Grade VS 1  
Table 72%  
Girdle 69%  
Medium

Pointed  
EXCELLENT  
EXCELLENT  
NONE  
IGI LG711530007

Comments: This Laboratory Grown Diamond was created by Chemical Vapor Deposition (CVD) growth process. Type IIa