

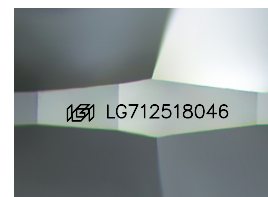
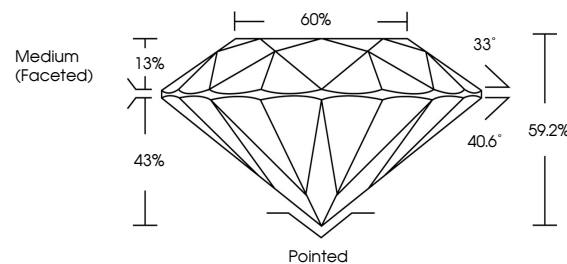


ELECTRONIC COPY

LABORATORY GROWN DIAMOND REPORT

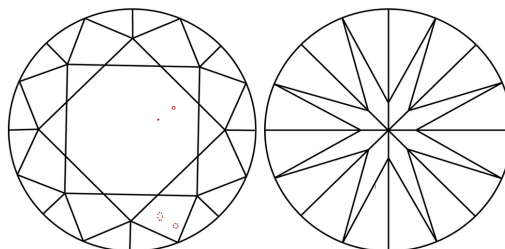
LG712518046
Report verification at igi.org

PROPORTIONS



Sample Image Used

CLARITY CHARACTERISTICS



KEY TO SYMBOLS

Red symbols indicate internal characteristics.
Green symbols indicate external characteristics.

COLOR

D E F G H I J Faint Very Light Light

CLARITY

IF WS¹⁻² VS¹⁻² SI¹⁻² |¹⁻³

Internally Flawless	Very Very Slightly Included	Very Slightly Included	Slightly Included	Included
------------------------	--------------------------------	---------------------------	----------------------	----------



May 27, 2025

IGI Report Number **LG712518046**Description **LABORATORY GROWN DIAMOND**Shape and Cutting Style **ROUND BRILLIANT**

Measurements 9.28 - 9.32 X 5.50 MM

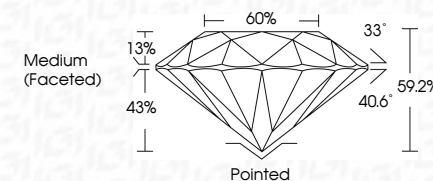
GRADING RESULTS

Carat Weight 2.91 CARATS

Color Grade

Clarity Grade VS 1

Cut Grade **IDEAL**



ADDITIONAL GRADING INFORMATION

Polish **EXCELLENT**Symmetry **EXCELLENT**Fluorescence **NONE**Inscription(s) LG712518046

Comments: This Laboratory Grown Diamond was created by Chemical Vapor Deposition (CVD) growth process.
Type IIa



© IGI 2020, International Gemological Institute

FD - 10 20

www.igi.org



THIS DOCUMENT WAS PRODUCED WITH THE FOLLOWING SECURITY MEASURES: SPECIAL DOCUMENT PAPER, INK SCREENS, WATERMARK, BACKGROUND DESIGNS, HOLOGRAM AND OTHER SECURITY FEATURES NOT LISTED AND DO EXCEED DOCUMENT SECURITY INDUSTRY GUIDELINE

May 27, 2026	2.91 CARATS	Color Weight	Pointed
GI Report No. G172518046	F	Color Grade	EXCELLENT
ROUND BRILLIANT	VS 1	Clarity Grade	EXCELLENT
GI 28 - 9.32 x 5.50 MM	IDEAL	Cut Grade	NONE
	59.2%	Cut Grade	1891 G172518046
	60%	Depth	
	Medium (Faceted)	Table	
		Girdle	
		Culet	
		Polish	
		Symmetry	
		Fluorescence	
		Inscription(s)	
		Comments:	
			This Laboratory Grown Diamond was created by Chemical Vapor Deposition (CVD) growth process.
		Type IIA	