

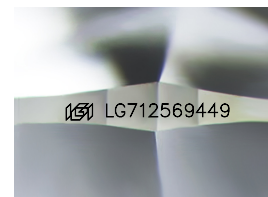
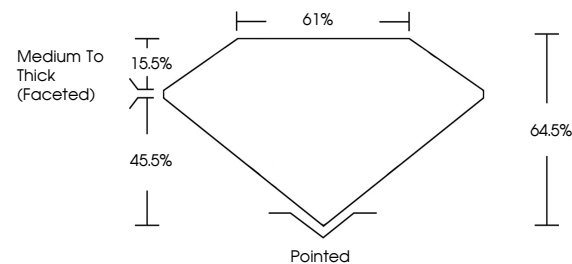


**ELECTRONIC COPY**

## LABORATORY GROWN DIAMOND REPORT

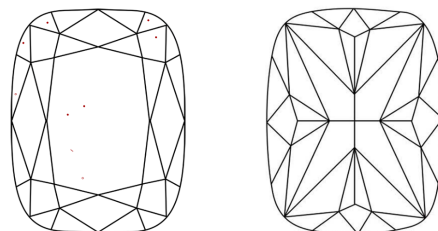
LG712569449  
Report verification at [igi.org](https://igi.org)

## PROPORTIONS



Sample Image Used

## CLARITY CHARACTERISTICS



## KEY TO SYMBOLS

Red symbols indicate internal characteristics.  
Green symbols indicate external characteristics.

**COLOR**

D E F G H I J Faint Very Light Light

## CLARITY

IF	VS <sup>1-2</sup>	VS <sup>1-2</sup>	SI <sup>1-2</sup>	I <sup>1-3</sup>
Internally Flawless	Very Very Slightly Included	Very Slightly Included	Slightly Included	Included

## LABORATORY GROWN DIAMOND REPORT



May 31, 2025

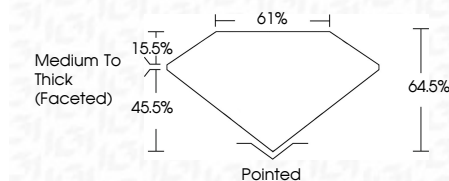
IGI Report Number **LG712569449**Description **LABORATORY GROWN DIAMOND**

Shape and Cutting Style **CUSHION MODIFIED  
BRILLIANT**

Measurements **7.93 X 7.18 X 4.63 MM**

## GRADING RESULTS

Carat Weight **2.02 CARATS**

Color Grade GClarity Grade VVS 2

### ADDITIONAL GRADING INFORMATION

Polish **EXCELLENT**Symmetry **EXCELLENT**Fluorescence **NONE**Inscription(s)  LG712569449

Comments: This Laboratory Grown Diamond was created by Chemical Vapor Deposition (CVD) growth process.  
Type IIa



© IGI 2020, International Gemological Institute

FD - 10 20



THIS DOCUMENT WAS PRODUCED WITH THE FOLLOWING SECURITY MEASURES: SPECIAL DOCUMENT PAPER, INK SCREENS, WATERMARK, BACKGROUND DESIGNS, HOLOGRAM AND OTHER SECURITY FEATURES NOT LISTED AND DO EXCEED DOCUMENT SECURITY INDUSTRY GUIDELINES

**www.igi.org**

May 31, 2025	GI Report No LG71256949	2.02 CARATS
CUSHION MODIFIED BRILLIANT		
95 X 7.18 X 4.63 MM		
Carat Weight		
Color Grade		
Clarity Grade	VVS 2	
Depth	64.5%	
Table	61%	
Grain	Medium to Thick (Faceted)	
Color	Painted	
Symmetry	EXCELLENT	
Fluorescence	NONE	
Inspection(s)	IGI LG71256949	

Comments:

This Laboratory Grown Diamond was created by Chemical Vapor Deposition (CVD) growth process.

Type IId