



ELECTRONIC COPY

LG712582429
Report verification at igi.org



June 5, 2025

IGI Report Number **LG712582429**

Description **LABORATORY GROWN DIAMOND**

Shape and Cutting Style **PRINCESS CUT**

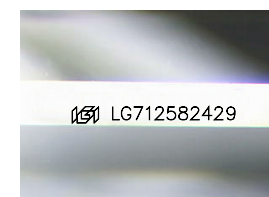
Measurements **7.55 X 7.29 X 5.24 MM**

GRADING RESULTS

Carat Weight **2.53 CARATS**

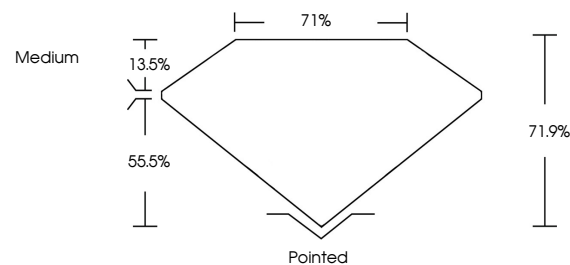
Color Grade **E**

Clarity Grade **VVS 1**

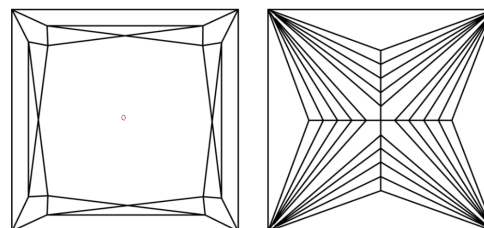


Sample Image Used

PROPORTIONS



CLARITY CHARACTERISTICS



KEY TO SYMBOLS

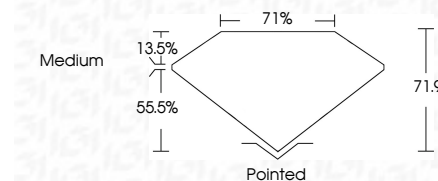
Red symbols indicate internal characteristics.
Green symbols indicate external characteristics.

COLOR

D E F G H I J Faint Very Light Light

CLARITY

IF	VS ¹⁻²	VS ¹⁻²	SI ¹⁻²	I ¹⁻³
Internally Flawless	Very Very Slightly Included	Very Slightly Included	Slightly Included	Included



ADDITIONAL GRADING INFORMATION

Polish **EXCELLENT**

Symmetry **EXCELLENT**

Fluorescence **NONE**

Inscription(s) **IGI LG712582429**

Comments: This Laboratory Grown Diamond was created by Chemical Vapor Deposition (CVD) growth process.
Type IIa



IGI



June 5, 2025
IGI Report No LG712582429
PRINCESS CUT

7.55 X 7.29 X 5.24 MM

2.53 CARATS
E

Carat Weight
Color Grade
Clarity Grade
Depth
Table
Girdle
Medium

71.9%
71%
Medium

Pointed
EXCELLENT
EXCELLENT
NONE
IGI LG712582429

Culet
Polish
Symmetry
Fluorescence
Inscription(s)

Comments: This Laboratory Grown Diamond was created by Chemical Vapor Deposition (CVD) growth process.
Type IIa