



ELECTRONIC COPY

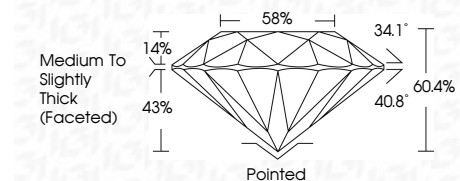
LG712586410
Report verification at igi.org



June 2, 2025
IGI Report Number LG712586410
Description LABORATORY GROWN DIAMOND
Shape and Cutting Style ROUND BRILLIANT
Measurements 12.83 - 12.86 X 7.76 MM

GRADING RESULTS

Carat Weight 7.79 CARATS
Color Grade E
Clarity Grade VS 1
Cut Grade IDEAL

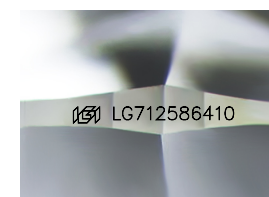


ADDITIONAL GRADING INFORMATION

Polish EXCELLENT
Symmetry EXCELLENT
Fluorescence NONE
Inscription(s) LG712586410
Comments: HEARTS & ARROWS
This Laboratory Grown Diamond was created by Chemical Vapor Deposition (CVD) growth process. Type IIa

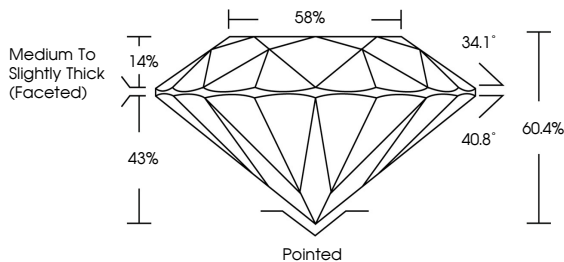


June 2, 2025
IGI Report No LG712586410
ROUND BRILLIANT
12.83 - 12.86 X 7.76 MM
7.79 CARATS
E
VS 1
IDEAL
60.4%
58%
Medium To Slightly Thick (Faceted)
Pointed
EXCELLENT
EXCELLENT
NONE
IGI LG712586410
Comments: HEARTS & ARROWS
This Laboratory Grown Diamond was created by Chemical Vapor Deposition (CVD) growth process. Type IIa

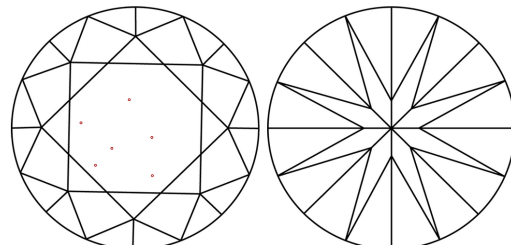


Sample Image Used

PROPORTIONS



CLARITY CHARACTERISTICS



KEY TO SYMBOLS

Red symbols indicate internal characteristics.
Green symbols indicate external characteristics.



COLOR

Table with columns D, E, F, G, H, I, J and color descriptions: Faint, Very Light, Light

CLARITY

Table with columns IF, VS 1-2, VS 1-2, SI 1-2, I 1-3 and descriptions: Internally Flawless, Very Very Slightly Included, Very Slightly Included, Slightly Included, Included



June 2, 2025
IGI Report Number LG712586410
Description LABORATORY GROWN DIAMOND
Shape and Cutting Style ROUND BRILLIANT
Measurements 12.83 - 12.86 X 7.76 MM

GRADING RESULTS

Carat Weight 7.79 CARATS
Color Grade E
Clarity Grade VS 1
Cut Grade IDEAL

ADDITIONAL GRADING INFORMATION

Polish EXCELLENT
Symmetry EXCELLENT
Fluorescence NONE
Inscription(s) LG712586410

Comments: HEARTS & ARROWS
This Laboratory Grown Diamond was created by Chemical Vapor Deposition (CVD) growth process. Type IIa