



INTERNATIONAL GEMOLOGICAL INSTITUTE

ELECTRONIC COPY

LABORATORY GROWN DIAMOND REPORT

June 5, 2025
IGI Report Number **LG712587219**
Description **LABORATORY GROWN DIAMOND**
Shape and Cutting Style **PRINCESS CUT**
Measurements **4.49 X 4.45 X 3.09 MM**

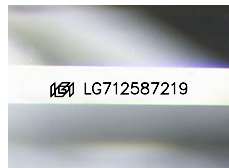
GRADING RESULTS

Carat Weight **0.53 CARAT**
Color Grade **D**
Clarity Grade **VS 1**

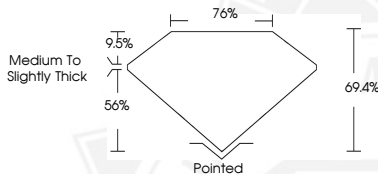
ADDITIONAL GRADING INFORMATION

Polish **VERY GOOD**
Symmetry **FAIR**
Fluorescence **NONE**
Inscription(s) **IGI LG712587219**

Comments: This Laboratory Grown Diamond was created by
Chemical Vapor Deposition (CVD) growth process.
Type IIa



Sample Image Used



June 5, 2025
IGI Report Number **LG712587219**
PRINCESS CUT
LABORATORY GROWN DIAMOND
4.49 X 4.45 X 3.09 MM
Carat Weight **0.53 CARAT**
Color Grade **D**
Clarity Grade **VS 1**
Polish **VERY GOOD**
Symmetry **FAIR**
Fluorescence **NONE**
Inscription(s) **IGI LG712587219**
Comments: This Laboratory Grown Diamond was created by
Chemical Vapor Deposition (CVD) growth process. Type IIa



June 5, 2025
IGI Report Number **LG712587219**
PRINCESS CUT
LABORATORY GROWN DIAMOND
4.49 X 4.45 X 3.09 MM
Carat Weight **0.53 CARAT**
Color Grade **D**
Clarity Grade **VS 1**
Polish **VERY GOOD**
Symmetry **FAIR**
Fluorescence **NONE**
Inscription(s) **IGI LG712587219**
Comments: This Laboratory Grown Diamond was created by
Chemical Vapor Deposition (CVD) growth process. Type IIa



THIS DOCUMENT WAS PRODUCED WITH THE FOLLOWING SECURITY MEASURES: SPECIAL DOCUMENT PAPER, INK SCREENS, WATERMARK, BACKGROUND DESIGN, HOLOGRAM AND OTHER SECURITY FEATURES NOT LISTED AND DO EXCEED DOCUMENT SECURITY INDUSTRY GUIDELINES.

For terms & conditions and to verify this report, please visit www.igi.org