



ELECTRONIC COPY

LG713505182
Report verification at igi.org



June 26, 2025
IGI Report Number **LG713505182**
Description **LABORATORY GROWN DIAMOND**
Shape and Cutting Style **CUT CORNERED
RECTANGULAR MODIFIED
BRILLIANT**
Measurements **7.13 X 4.92 X 3.46 MM**
GRADING RESULTS
Carat Weight **1.08 CARAT**
Color Grade **FANCY INTENSE GREENISH
YELLOW**
Clarity Grade **VVS 2**

LABORATORY GROWN DIAMOND REPORT

June 26, 2025
IGI Report Number **LG713505182**
Description **LABORATORY GROWN DIAMOND**
Shape and Cutting Style **CUT CORNERED RECTANGULAR
MODIFIED BRILLIANT**
Measurements **7.13 X 4.92 X 3.46 MM**

GRADING RESULTS

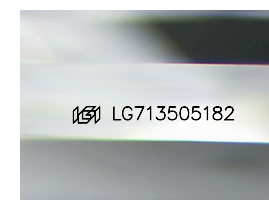
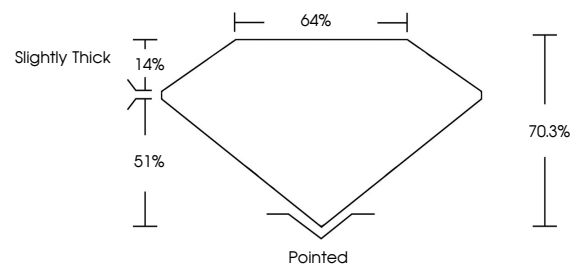
Carat Weight **1.08 CARAT**
Color Grade **FANCY INTENSE GREENISH
YELLOW**
Clarity Grade **VVS 2**

ADDITIONAL GRADING INFORMATION

Polish **EXCELLENT**
Symmetry **EXCELLENT**
Fluorescence **NONE**
Inscription(s) **IGI LG713505182**

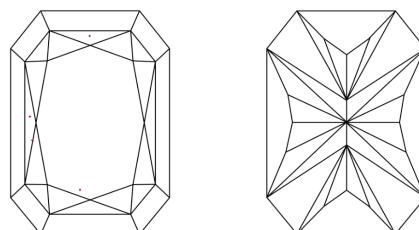
Comments: This Laboratory Grown Diamond was created by Chemical Vapor Deposition (CVD) growth process.
Indications of post-growth treatment.

PROPORTIONS



Sample Image Used

CLARITY CHARACTERISTICS



KEY TO SYMBOLS

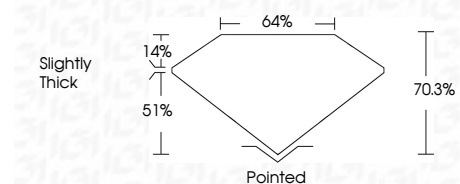
Red symbols indicate internal characteristics.
Green symbols indicate external characteristics.

COLOR

D E F G H I J Faint Very Light Light

CLARITY

IF	WS ¹⁻²	VS ¹⁻²	SI ¹⁻²	I ¹⁻³
Internally Flawless	Very Very Slightly Included	Very Slightly Included	Slightly Included	Included



ADDITIONAL GRADING INFORMATION

Polish **EXCELLENT**
Symmetry **EXCELLENT**
Fluorescence **NONE**
Inscription(s) **IGI LG713505182**
Comments: This Laboratory Grown Diamond was created by Chemical Vapor Deposition (CVD) growth process.
Indications of post-growth treatment.



IGI



June 26, 2025
IGI Report No LG713505182
CUT CORNERED RECT. MODIFIED BRILLIANT
1.08 CARAT
FANCY INTENSE GREENISH YELLOW
VVS 2
7.13 X 4.92 X 3.46 MM
70.3%
64%
Slightly Thick
Pointed
EXCELLENT
EXCELLENT
NONE
IGI LG713505182

Comments: This Laboratory Grown Diamond was created by Chemical Vapor Deposition (CVD) growth process.
Indications of post-growth treatment.