



**INTERNATIONAL
GEMOLOGICAL
INSTITUTE**

LABORATORY GROWN DIAMOND REPORT

June 6, 2025
 IGI Report Number **LG713516951**
 Description **LABORATORY GROWN DIAMOND**
 Shape and Cutting Style **SQUARE CUSHION MODIFIED BRILLIANT**
 Measurements **4.57 X 4.42 X 2.80 MM**

GRADING RESULTS

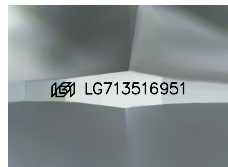
Carat Weight **0.45 CARAT**
 Color Grade **D**
 Clarity Grade **VVS 2**

ADDITIONAL GRADING INFORMATION

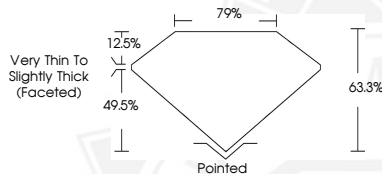
Polish **VERY GOOD**
 Symmetry **GOOD**
 Fluorescence **NONE**
 Inscription(s) **IGI LG713516951**

Comments: As Grown - No indication of post-growth treatment.
 This Laboratory Grown Diamond was created by High Pressure High Temperature (HPHT) growth process.
 Type II

ELECTRONIC COPY



Sample Image Used



June 6, 2025
 IGI Report Number **LG713516951**
**SQUARE CUSHION MODIFIED
BRILLIANT**
LABORATORY GROWN DIAMOND
4.57 X 4.42 X 2.80 MM
 Carat Weight **0.45 CARAT**
 Color Grade **D**
 Clarity Grade **VVS 2**
 Polish **VERY GOOD**
 Symmetry **GOOD**
 Fluorescence **NONE**
 Inscription(s) **IGI LG713516951**
 Comments: As Grown - No indication of post-growth treatment. This Laboratory Grown Diamond was created by High Pressure High Temperature (HPHT) growth process. Type II



June 6, 2025
 IGI Report Number **LG713516951**
**SQUARE CUSHION MODIFIED
BRILLIANT**
LABORATORY GROWN DIAMOND
4.57 X 4.42 X 2.80 MM
 Carat Weight **0.45 CARAT**
 Color Grade **D**
 Clarity Grade **VVS 2**
 Polish **VERY GOOD**
 Symmetry **GOOD**
 Fluorescence **NONE**
 Inscription(s) **IGI LG713516951**
 Comments: As Grown - No indication of post-growth treatment. This Laboratory Grown Diamond was created by High Pressure High Temperature (HPHT) growth process. Type II

THIS DOCUMENT WAS PRODUCED WITH THE FOLLOWING SECURITY MEASURES: SPECIAL DOCUMENT PAPER, INK SCREENS, WATERMARK, BACKGROUND DESIGN, HOLOGRAM AND OTHER SECURITY FEATURES NOT LISTED AND DO EXCEED DOCUMENT SECURITY INDUSTRY GUIDELINES.

For terms & conditions and to verify this report, please visit www.igi.org