

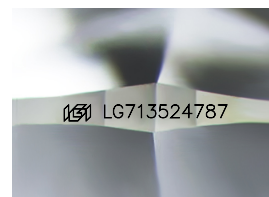
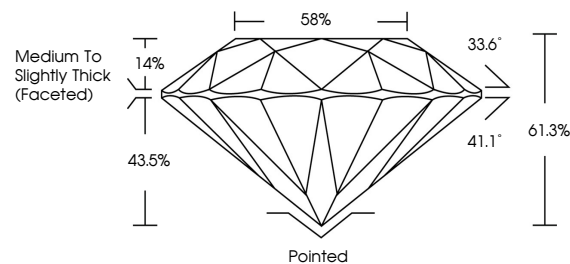


ELECTRONIC COPY

LABORATORY GROWN DIAMOND REPORT

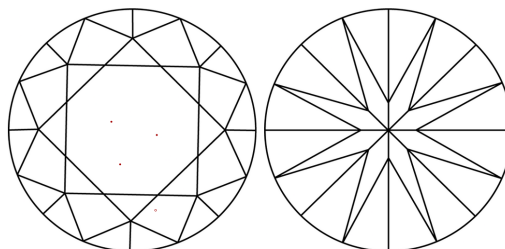
LG713524787
Report verification at igi.org

PROPORTIONS



Sample Image Used

CLARITY CHARACTERISTICS



KEY TO SYMBOLS

Red symbols indicate internal characteristics.
Green symbols indicate external characteristics.

COLOR

D E F G H I J Faint Very Light Light

CLARITY

IF WS¹⁻² VS¹⁻² SI¹⁻² |¹⁻³

Internally Flawless	Very Very Slightly Included	Very Slightly Included	Slightly Included	Included
------------------------	--------------------------------	---------------------------	----------------------	----------



June 12, 2025

IGI Report Number **LG713524787**Description **LABORATORY GROWN DIAMOND**Shape and Cutting Style **ROUND BRILLIANT**

Measurements 9.49 - 9.51 X 5.83 MM

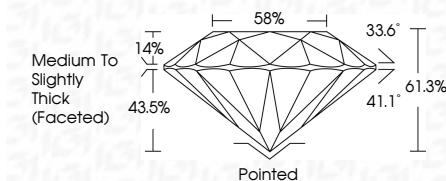
GRADING RESULTS

Carat Weight 3.24 CARATS

Color Grade

Clarity Grade WS 2

Cut Grade **IDEAL**



ADDITIONAL GRADING INFORMATION

Polish **EXCELLENT**Symmetry **EXCELLENT**Fluorescence **NONE**Inscription(s) LG713524787

Comments: This Laboratory Grown Diamond was created by Chemical Vapor Deposition (CVD) growth process.
Type IIa



© IGI 2020, International Gemological Institute

FD - 10 20

www.igi.org



THIS DOCUMENT WAS PRODUCED WITH THE FOLLOWING SECURITY MEASURES: SPECIAL DOCUMENT PAPER, INK SCREENS, WATERMARK, BACKGROUND DESIGNS, HOLOGRAM AND OTHER SECURITY FEATURES NOT LISTED AND DO EXCEED DOCUMENT SECURITY INDUSTRY GUIDELINES

June 12, 2025
IGI Report No LG713524787
ROUND BRILLIANT

9.99 - 9.51 X 5.63 MM		3.24 CARATS	
Carat Weight		F	
Color Grade		VVS 2	
Clarity Grade		IDEAL	
Cut Grade		61.3%	
Depth		58%	
Table		Medium To Slightly Thick (Faceted)	
Girdle			
Culet		Pointed	
Polish		EXCELLENT	
Symmetry		EXCELLENT	
Fluorescence		NONE	
International		Yes (GIA report)	

Comments:
This Laboratory Grown Diamond was created by Chemical Vapor Deposition (CVD) growth process.