



ELECTRONIC COPY

LG713531397
Report verification at igi.org



June 23, 2025
IGI Report Number **LG713531397**
Description **LABORATORY GROWN DIAMOND**
Shape and Cutting Style **CUSHION MODIFIED BRILLIANT CUT**
Measurements **11.13 X 7.48 X 4.86 MM**
GRADING RESULTS
Carat Weight **3.61 CARATS**
Color Grade **D**
Clarity Grade **VVS 1**

June 23, 2025
IGI Report Number **LG713531397**
Description **LABORATORY GROWN DIAMOND**
Shape and Cutting Style **CUSHION MODIFIED BRILLIANT CUT**
Measurements **11.13 X 7.48 X 4.86 MM**

GRADING RESULTS

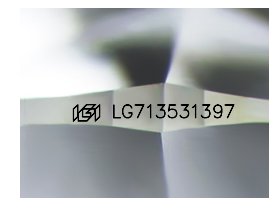
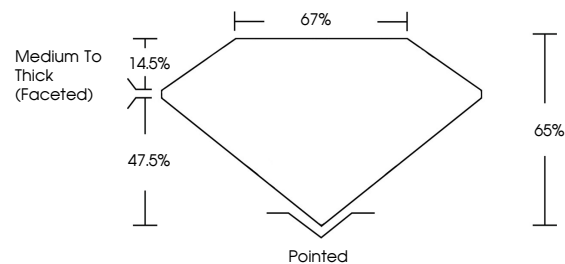
Carat Weight **3.61 CARATS**
Color Grade **D**
Clarity Grade **VVS 1**

ADDITIONAL GRADING INFORMATION

Polish **EXCELLENT**
Symmetry **EXCELLENT**
Fluorescence **NONE**
Inscription(s) **IGI LG713531397**

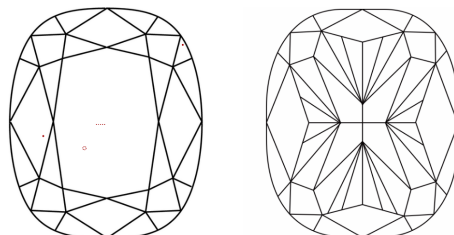
Comments: This Laboratory Grown Diamond was created by Chemical Vapor Deposition (CVD) growth process.
Type IIa

PROPORTIONS



Sample Image Used

CLARITY CHARACTERISTICS



KEY TO SYMBOLS

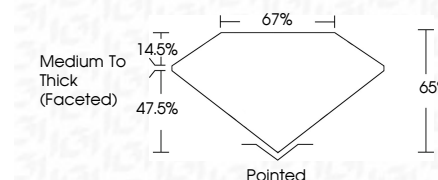
Red symbols indicate internal characteristics.
Green symbols indicate external characteristics.

COLOR

D E F G H I J Faint Very Light Light

CLARITY

| | | | | |
|---------------------|-----------------------------|------------------------|-------------------|------------------|
| IF | VS ¹⁻² | VS ¹⁻² | SI ¹⁻² | I ¹⁻³ |
| Internally Flawless | Very Very Slightly Included | Very Slightly Included | Slightly Included | Included |



ADDITIONAL GRADING INFORMATION

Polish **EXCELLENT**
Symmetry **EXCELLENT**
Fluorescence **NONE**
Inscription(s) **IGI LG713531397**
Comments: This Laboratory Grown Diamond was created by Chemical Vapor Deposition (CVD) growth process.
Type IIa



June 23, 2025
IGI Report No LG713531397
CUSHION MODIFIED BRILLIANT CUT
11.13 X 7.48 X 4.86 MM
3.61 CARATS
D
3.61 CARATS
D
VVS 1
65%
67%
Medium To Thick (Faceted)
Pointed
EXCELLENT
EXCELLENT
NONE
IGI LG713531397
Comments: This Laboratory Grown Diamond was created by Chemical Vapor Deposition (CVD) growth process.
Type IIa