



ELECTRONIC COPY

LG713534302
Report verification at igi.org



June 14, 2025

IGI Report Number **LG713534302**

Description **LABORATORY GROWN DIAMOND**

Shape and Cutting Style **ROUND BRILLIANT**

Measurements **13.88 - 13.94 X 8.46 MM**

GRADING RESULTS

Carat Weight **10.01 CARATS**

Color Grade **FANCY VIVID BLUE**

Clarity Grade **VS 1**

Cut Grade **IDEAL**

June 14, 2025
IGI Report Number **LG713534302**
Description **LABORATORY GROWN DIAMOND**
Shape and Cutting Style **ROUND BRILLIANT**
Measurements **13.88 - 13.94 X 8.46 MM**

GRADING RESULTS

Carat Weight **10.01 CARATS**

Color Grade **FANCY VIVID BLUE**

Clarity Grade **VS 1**

Cut Grade **IDEAL**

ADDITIONAL GRADING INFORMATION

Polish **EXCELLENT**

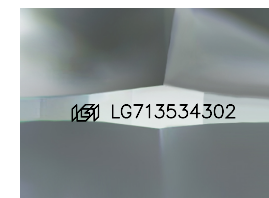
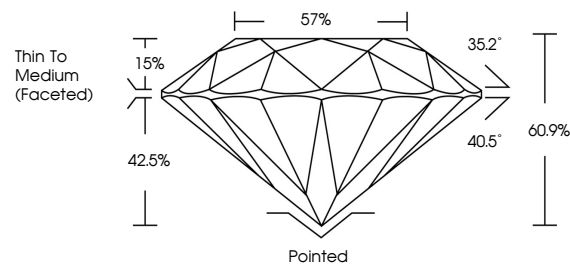
Symmetry **EXCELLENT**

Fluorescence **NONE**

Inscription(s) **LG713534302**

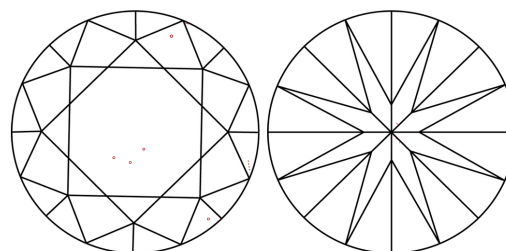
Comments: This Laboratory Grown Diamond was created by Chemical Vapor Deposition (CVD) growth process.
Indications of post-growth treatment.

PROPORTIONS



Sample Image Used

CLARITY CHARACTERISTICS



KEY TO SYMBOLS

Red symbols indicate internal characteristics.
Green symbols indicate external characteristics.

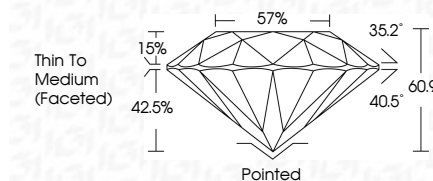
COLOR

D E F G H I J Faint Very Light Light

CLARITY

IF VS¹⁻² VS¹⁻² SI¹⁻² I¹⁻³

Internally Flawless Very Very Slightly Included Very Slightly Included Slightly Included Included



ADDITIONAL GRADING INFORMATION

Polish **EXCELLENT**

Symmetry **EXCELLENT**

Fluorescence **NONE**

Inscription(s) **LG713534302**

Comments: This Laboratory Grown Diamond was created by Chemical Vapor Deposition (CVD) growth process.
Indications of post-growth treatment.



IGI



June 14, 2025
IGI Report No LG713534302
ROUND BRILLIANT

10.01 CARATS
Carat Weight
FANCY VIVID BLUE
Color Grade

VS 1
IDEAL
60.9%
57%
Thin To Medium (Faceted)
Depth
Table
Girdle

Pointed
EXCELLENT
EXCELLENT
NONE
NONE
Inscriptions(s)
IGI LG713534302

Comments: This Laboratory Grown Diamond was created by Chemical Vapor Deposition (CVD) growth process.
Indications of post-growth treatment.