

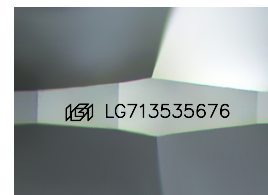
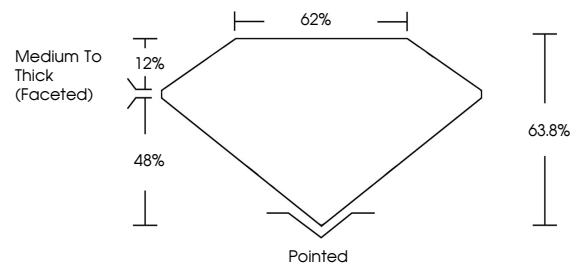


ELECTRONIC COPY

LABORATORY GROWN DIAMOND REPORT

LG713535676
Report verification at igi.org

PROPORTIONS



Sample Image Used

COLOR

D E F G H I J Faint Very Light Light

CLARITY

IF VS¹⁻² VS¹⁻² S¹⁻² |¹⁻³

Internally Flawless	Very Very Slightly Included	Very Slightly Included	Slightly Included	Included
------------------------	--------------------------------	---------------------------	----------------------	----------

LABORATORY GROWN DIAMOND REPORT



June 16, 2025

IGI Report Number **LG713535676**

Description	LABORATORY GROWN DIAMOND
-------------	--------------------------

Shape and Cutting Style **SQUARE CUSHION MODIFIED
BRILLIANT**

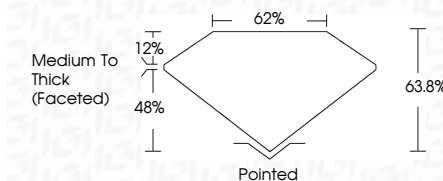
Measurements **6.73 X 6.61 X 4.22 MM**

GRADING RESULTS

Carat Weight 1.54 CARAT

Color Grade D

Clarity Grade VS 1



ADDITIONAL GRADING INFORMATION

Polish **EXCELLENT**Symmetry **EXCELLENT**Fluorescence **NONE**Inscription(s) LG713535676

Comments: This Laboratory Grown Diamond was created by Chemical Vapor Deposition (CVD) growth process.
Type IIa



© IGI 2020, International Gemological Institute

FD - 10 20

www.igi.org



THIS DOCUMENT WAS PRODUCED WITH THE FOLLOWING SECURITY MEASURES: SPECIAL DOCUMENT PAPER, INK SCREENS, WATERMARK, BACKGROUND DESIGNS, HOLOGRAM AND OTHER SECURITY FEATURES NOT LISTED AND DO EXCEED DOCUMENT SECURITY INDUSTRY GUIDELINES

June 14, 2026	GI Report No. L6773535676
SQUARE CUSHION MODIFIED BRILLIANT	
Carat Weight	1.54 CARAT
Color Grade	D
Clarity Grade	VS 1
Depth	63.6%
Table	62%
Girdle	Medium to Thick (Faceted)
Culet	Pointed
Polish	EXCELLENT
Symmetry	EXCELLENT
Fluorescence	NONE
Inscription(s)	689 LG773535676

Comments:

The Laboratory Grown Diamond was
 created using the Chemical Vapor Deposition
 (CVD) growth process.

Type IIA