



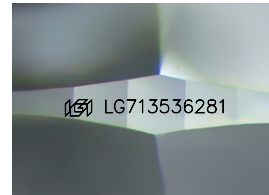
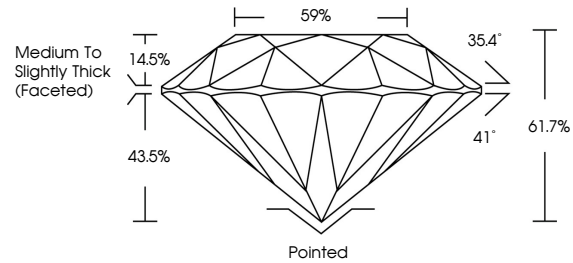
**INTERNATIONAL
GEMOLOGICAL
INSTITUTE**

ELECTRONIC COPY

LABORATORY GROWN DIAMOND REPORT

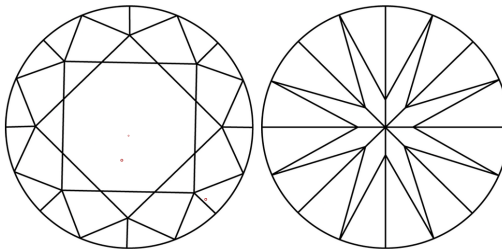
LG713536281
Report verification at igi.org

PROPORTIONS



Sample Image Used

CLARITY CHARACTERISTICS



KEY TO SYMBOLS

Red symbols indicate internal characteristics.
Green symbols indicate external characteristics.

COLOR

D E F G H I J Faint Very Light Light

CLARITY

IF WS¹⁻² VS¹⁻² SI¹⁻² I¹⁻³

Internally Flawless	Very Very Slightly Included	Very Slightly Included	Slightly Included	Included
------------------------	--------------------------------	---------------------------	----------------------	----------



© IGI 2020, International Gemological Institute

FD - 10 20

www.igi.org

LABORATORY GROWN DIAMOND REPORT



June 16, 2025

IGI Report Number LG713536281

Description	LABORATORY GROWN DIAMOND
-------------	--------------------------

Shape and Cutting Style **ROUND BRILLIANT**

Measurements 8.09 - 8.15 X 5.01 MM

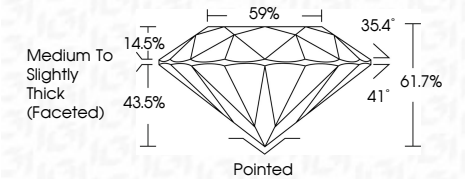
GRADING RESULTS

Carat Weight **2.04 CARATS**

Color Grade **D**

Clarity Grade VS 1

Cut Grade **IDEAL**



ADDITIONAL GRADING INFORMATION

Polish **EXCELLENT**Symmetry **EXCELLENT**Fluorescence **NONE**Inscription(s) **151 LG713536281**

Comments: This Laboratory Grown Diamond was created by Chemical Vapor Deposition (CVD) growth process.
Type IIa



IGI

June 16, 2025	IGI Report No. I971935Z81	
ROUND BRILLIANT		
6.09 - 6.15 X 6.01 MM	2.04 CARATS	
Carat Weight	D	
Color Grade	Vs1	
Cut Grade	IDEAL	
Depth	61.7%	
Table	59%	
Girdle	Medium to Slightly Thick (focused)	
Culet	Poished	
Polish	EXCELLENT	
Symmetry	EXCELLENT	
Fluorescence	NONE	
Inscriptions(s)	#61 G971935Z81	
Comments:		
	This Laboratory Grown Diamond was created by Chemical Vapor Deposition (CVD) growth process.	
Type IId		