



ELECTRONIC COPY

LABORATORY GROWN DIAMOND REPORT

June 6, 2025	
IGI Report Number	LG713544575
Description	LABORATORY GROWN DIAMOND
Shape and Cutting Style	PRINCESS CUT
Measurements	6.02 X 5.99 X 4.27 MM

GRADING RESULTS

Carat Weight	1.32 CARAT
Color Grade	E
Clarity Grade	VS 2

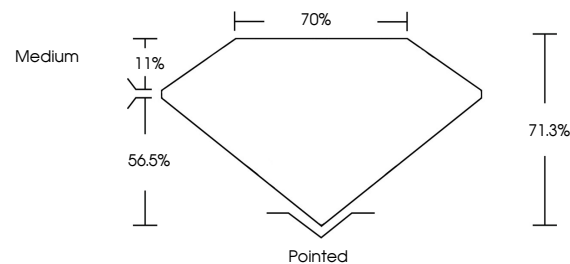
ADDITIONAL GRADING INFORMATION

Polish	EXCELLENT
Symmetry	EXCELLENT
Fluorescence	NONE
Inscription(s)	151 LG713544575

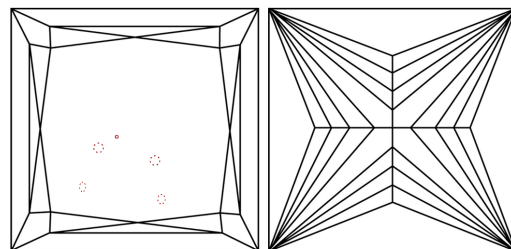
Comments: This Laboratory Grown Diamond was created by Chemical Vapor Deposition (CVD) growth process.
Type IIa

LG713544575
Report verification at igi.org

PROPORTIONS

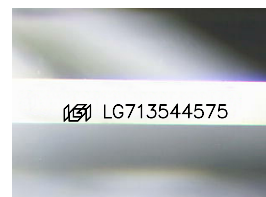


CLARITY CHARACTERISTICS



KEY TO SYMBOLS

Red symbols indicate internal characteristics.
Green symbols indicate external characteristics.



Sample Image Used

COLOR

D E F G H I J Faint Very Light Light

CLARITY

IF	VS ¹⁻²	VS ¹⁻²	SI ¹⁻²	I ¹⁻³
Internally Flawless	Very Very Slightly Included	Very Slightly Included	Slightly Included	Included

LABORATORY GROWN DIAMOND REPORT



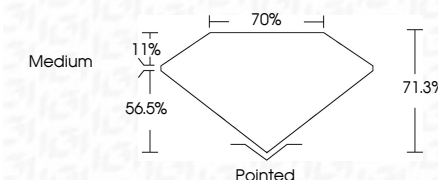
June 6, 2025	
IGI Report Number	LG713544575
Description	LABORATORY GROWN DIAMOND
Shape and Cutting Style	PRINCESS CUT
Measurements	6.02 X 5.99 X 4.27 MM

GRADING RESULTS

Carat Weight	1.32 CARAT
Color Grade	E
Clarity Grade	VS 2

ADDITIONAL GRADING INFORMATION

Polish	EXCELLENT
Symmetry	EXCELLENT
Fluorescence	NONE
Inscription(s)	 LG713544575
<p>Comments: This Laboratory Grown Diamond was created by Chemical Vapor Deposition (CVD) growth process.</p> <p>Type IIa</p>	



© IGI 2020, International Gemological Institute

FD - 10 20



THIS DOCUMENT WAS PRODUCED WITH THE FOLLOWING SECURITY MEASURES: SPECIAL DOCUMENT PAPER, INK SCREENS, WATERMARK, BACKGROUND DESIGNS, HOLOGRAM AND OTHER SECURITY FEATURES NOT LISTED AND DO EXCEED DOCUMENT SECURITY INDUSTRY GUIDELINES

www.igi.org



June 6, 2025
 LGI Report No LG713544575
 PRINCESS CLIT

1.02 X 5.99 X 4.27 MM	1.32 CARAT
Carat Weight	E
Color Grade	VS 2
Clarity Grade	VS 2
Depth	71.5%
Table	70%
Girdle	Medium
Polish	Polished
Symmetry	EXCELLENT
Fluorescence	EXCELLENT
Measurements (mm)	NONE
	4811 (57)3546675

Comments:
This Laboratory Grown Diamond was created by Chemical Vapor Deposition (CVD) growth process.