



ELECTRONIC COPY

LG713551720
Report verification at igi.org



June 14, 2025
IGI Report Number LG713551720
Description LABORATORY GROWN DIAMOND
Shape and Cutting Style ROUND BRILLIANT
Measurements 6.89 - 6.94 X 4.26 MM
GRADING RESULTS
Carat Weight 1.24 CARAT
Color Grade E
Clarity Grade VVS 1
Cut Grade IDEAL

June 14, 2025
IGI Report Number LG713551720
Description LABORATORY GROWN DIAMOND
Shape and Cutting Style ROUND BRILLIANT
Measurements 6.89 - 6.94 X 4.26 MM

GRADING RESULTS

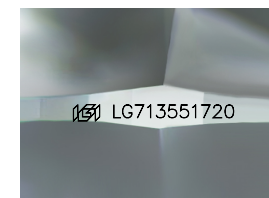
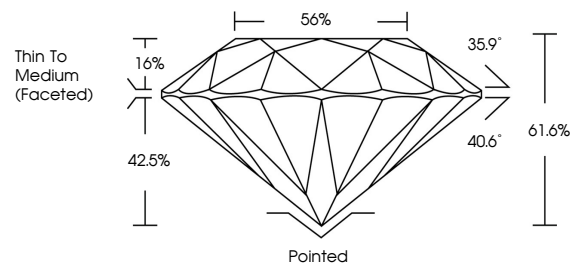
Carat Weight 1.24 CARAT
Color Grade E
Clarity Grade VVS 1
Cut Grade IDEAL

ADDITIONAL GRADING INFORMATION

Polish EXCELLENT
Symmetry EXCELLENT
Fluorescence NONE
Inscription(s) LG713551720

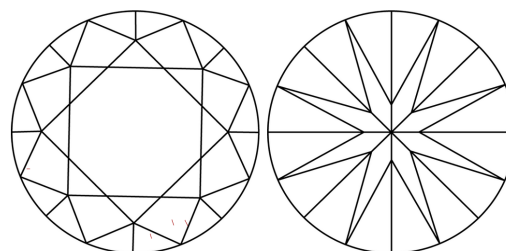
Comments: As Grown - No indication of post-growth treatment.
This Laboratory Grown Diamond was created by High Pressure High Temperature (HPHT) growth process.
Type II

PROPORTIONS



Sample Image Used

CLARITY CHARACTERISTICS



KEY TO SYMBOLS

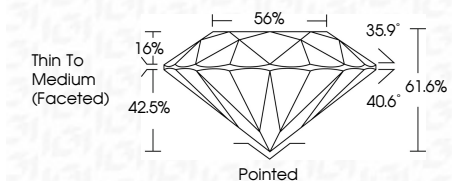
Red symbols indicate internal characteristics.
Green symbols indicate external characteristics.

COLOR

D E F G H I J Faint Very Light Light

CLARITY

IF VVS 1-2 VS 1-2 SI 1-2 I 1-3
Internally Flawless Very Very Slightly Included Very Slightly Included Slightly Included Included



ADDITIONAL GRADING INFORMATION

Polish EXCELLENT
Symmetry EXCELLENT
Fluorescence NONE
Inscription(s) LG713551720
Comments: As Grown - No indication of post-growth treatment.
This Laboratory Grown Diamond was created by High Pressure High Temperature (HPHT) growth process.
Type II



IGI



June 14, 2025
IGI Report No LG713551720
ROUND BRILLIANT
6.89 - 6.94 X 4.26 MM
1.24 CARAT E
VVS 1 IDEAL
61.6% 56%
Thin To Medium (Faceted)
Pointed EXCELLENT EXCELLENT NONE
None LG713551720
Comments: As Grown - No indication of post-growth treatment.
This Laboratory Grown Diamond was created by High Pressure High Temperature (HPHT) growth process.
Type II