



ELECTRONIC COPY

LG713566364 Report verification at igi.org



December 25, 2025

IGI Report Number LG713566364

Description LABORATORY GROWN DIAMOND

Shape and Cutting Style ROUND BRILLIANT

Measurements 7.34 - 7.38 X 4.61 MM

GRADING RESULTS

Carat Weight 1.55 CARAT

Color Grade D

Clarity Grade VVS 2

Cut Grade EXCELLENT

December 25, 2025

IGI Report Number LG713566364

Description LABORATORY GROWN DIAMOND

Shape and Cutting Style ROUND BRILLIANT

Measurements 7.34 - 7.38 X 4.61 MM

GRADING RESULTS

Carat Weight 1.55 CARAT

Color Grade D

Clarity Grade VVS 2

Cut Grade EXCELLENT

ADDITIONAL GRADING INFORMATION

Polish EXCELLENT

Symmetry EXCELLENT

Fluorescence NONE

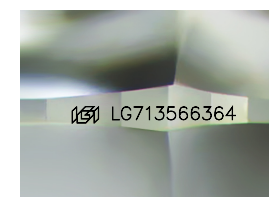
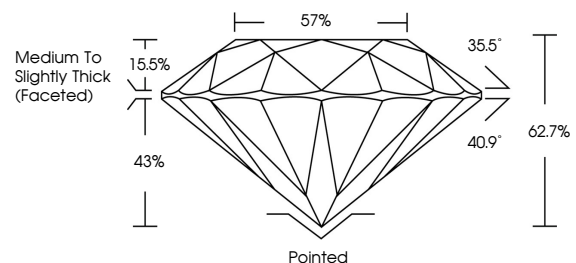
Inscription(s) IGI LG713566364

Comments: As Grown - No indication of post-growth treatment.

This Laboratory Grown Diamond was created by High Pressure High Temperature (HPHT) growth process.

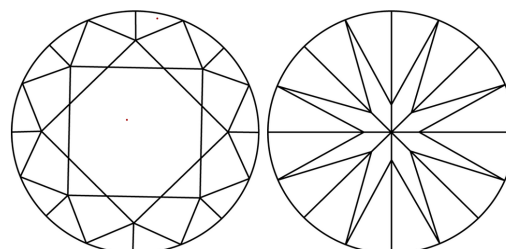
Type II

PROPORTIONS



Sample Image Used

CLARITY CHARACTERISTICS



KEY TO SYMBOLS

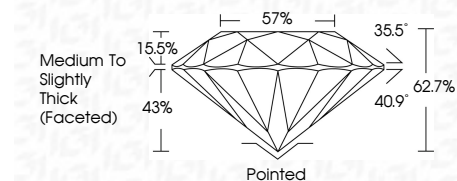
Red symbols indicate internal characteristics. Green symbols indicate external characteristics.

COLOR

D E F G H I J Faint Very Light Light

CLARITY

FL IF VVS 1-2 VS 1-2 SI 1-2 I 1-3 Flawless Internally Flawless Very Very Slightly Included Very Slightly Included Slightly Included Included



ADDITIONAL GRADING INFORMATION

Polish EXCELLENT

Symmetry EXCELLENT

Fluorescence NONE

Inscription(s) IGI LG713566364

Comments: As Grown - No indication of post-growth treatment.

This Laboratory Grown Diamond was created by High Pressure High Temperature (HPHT) growth process.

Type II



IGI



Summary table of diamond characteristics: December 25, 2025, IGI Report No LG713566364, ROUND BRILLIANT, 7.34 - 7.38 X 4.61 MM, 1.55 CARAT, D, VVS 2, EXCELLENT, 62.7%, 57%, Medium To Slightly Thick (Faceted), Pointed, EXCELLENT, EXCELLENT, NONE, IGI LG713566364.

Comments: As Grown - No indication of post-growth treatment. This Laboratory Grown Diamond was created by High Pressure High Temperature (HPHT) growth process. Type II