



ELECTRONIC COPY

LG713595460
Report verification at igi.org



June 14, 2025
IGI Report Number **LG713595460**

Description **LABORATORY GROWN DIAMOND**

Shape and Cutting Style **CUT CORNERED
RECTANGULAR MODIFIED
BRILLIANT**

Measurements **8.16 X 5.40 X 3.48 MM**

GRADING RESULTS

Carat Weight **1.31 CARAT**

Color Grade **FANCY INTENSE YELLOW**

Clarity Grade **VVS 2**

LABORATORY GROWN DIAMOND REPORT

June 14, 2025

IGI Report Number **LG713595460**

Description **LABORATORY GROWN DIAMOND**

Shape and Cutting Style **CUT CORNERED RECTANGULAR
MODIFIED BRILLIANT**

Measurements **8.16 X 5.40 X 3.48 MM**

GRADING RESULTS

Carat Weight **1.31 CARAT**

Color Grade **FANCY INTENSE YELLOW**

Clarity Grade **VVS 2**

ADDITIONAL GRADING INFORMATION

Polish **EXCELLENT**

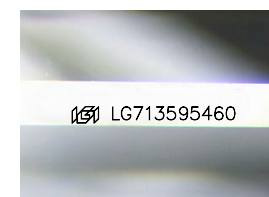
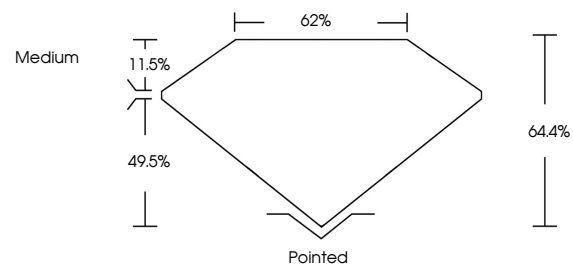
Symmetry **EXCELLENT**

Fluorescence **NONE**

Inscription(s) **IGI LG713595460**

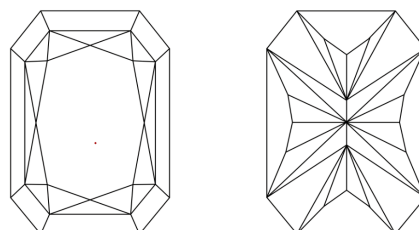
Comments: This Laboratory Grown Diamond was created by Chemical Vapor Deposition (CVD) growth process.

PROPORTIONS



Sample Image Used

CLARITY CHARACTERISTICS



KEY TO SYMBOLS

Red symbols indicate internal characteristics.
Green symbols indicate external characteristics.

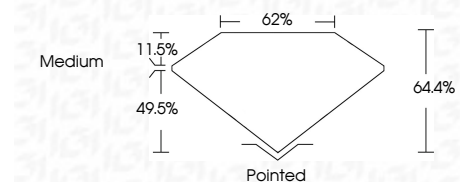
COLOR

D E F G H I J Faint Very Light Light

CLARITY

IF VS¹⁻² VS¹⁻² SI¹⁻² I¹⁻³

Internally Flawless Very Very Slightly Included Very Slightly Included Slightly Included Included



ADDITIONAL GRADING INFORMATION

Polish **EXCELLENT**

Symmetry **EXCELLENT**

Fluorescence **NONE**

Inscription(s) **IGI LG713595460**

Comments: This Laboratory Grown Diamond was created by Chemical Vapor Deposition (CVD) growth process.



June 14, 2025
IGI Report No LG713595460
CUT CORNERED RECT. MODIFIED BRILLIANT
8.16 X 5.40 X 3.48 MM
Carat Weight 1.31 CARAT
Color Grade FANCY INTENSE YELLOW
Clarity Grade VVS 2
Depth 49.5%
Table 11.5%
Girdle 62%
Medium
Culet Pointed
Polish EXCELLENT
Symmetry EXCELLENT
Fluorescence NONE
Inscription(s) IGI LG713595460
Comments: This Laboratory Grown Diamond was created by Chemical Vapor Deposition (CVD) growth process.