



**INTERNATIONAL
GEMOLOGICAL
INSTITUTE**

ELECTRONIC COPY

LG713596353
Report verification at [igi.org](https://www.igi.org)

LABORATORY GROWN DIAMOND REPORT



June 13, 2025

IGI Report Number **LG713596353**

Description	LABORATORY GROWN DIAMOND
-------------	--------------------------

Shape and Cutting Style **PRINCESS CUT**

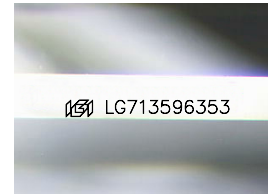
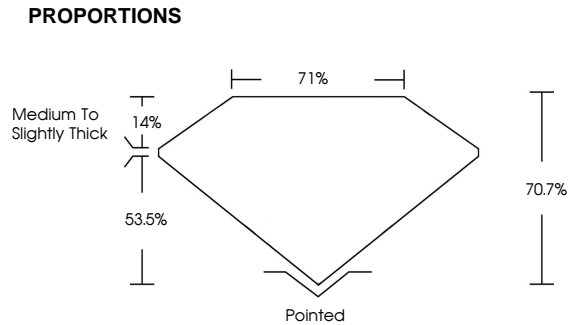
Measurements **8.66 X 8.43 X 5.96 MM**

GRADING RESULTS

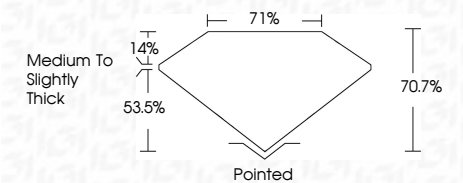
Carat Weight **3.99 CARATS**

Color Grade **E**

Clarity Grade VS 2



Sample Image Used



COLOR

D E F G H I J Faint Very Light Light

CLARITY

IF WS¹⁻² VS¹⁻² SI¹⁻² |¹⁻³

Internally Flawless	Very Very Slightly Included	Very Slightly Included	Slightly Included	Included
------------------------	--------------------------------	---------------------------	----------------------	----------



© IGI 2020, International Gemological Institute

FD - 10 20



IGI

June 13, 2025
IGI Report No LG713596353
PRINCESS CIT

8.66 X 8.43 X 5.96 MM
Carat Weight
3.99 CARATS

8.66 X 8.43 X 5.96 MM	3.99 CARATS
Carat Weight	
Color Grade	E

Clarity Grade	VS 2
Depth	70.7%
Table	71%

Girdle	Medium To Slightly Thick	Pointed
Quilet		

Color	Polished
Polish	EXCELLENT
Symmetry	EXCELLENT
Fluorescence	NONE

Inscription(s)	None
191 LG713596353	

Comments:
This Laboratory Grown Diamond was created by Chemical Vapor Deposition (CVD) growth process, Type IIa

Comments:
This Laboratory Grown Diamond was created by Chemical Vapor Deposition (CVD) growth process.

Type IIa (CV) grown process;

www.igi.org



THIS DOCUMENT WAS PRODUCED WITH THE FOLLOWING SECURITY MEASURES: SPECIAL DOCUMENT PAPER, INK SCREENS, WATERMARK, BACKGROUND DESIGNS, HOLOGRAM, AND OTHER SECURITY FEATURES NOT LISTED AND DO EXCEED DOCUMENT SECURITY INDUSTRY GUIDELINES