

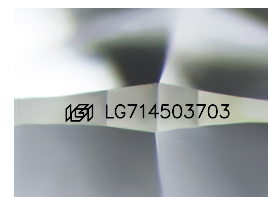
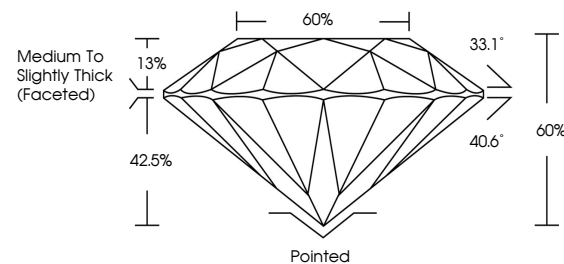


ELECTRONIC COPY

LABORATORY GROWN DIAMOND REPORT

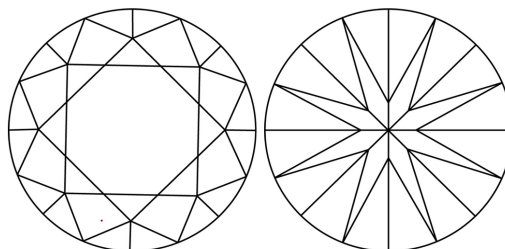
LG714503703
Report verification at igi.org

PROPORTIONS



Sample Image Used

CLARITY CHARACTERISTICS



KEY TO SYMBOLS

Red symbols indicate internal characteristics.
Green symbols indicate external characteristics.

COLOR

D E F G H I J Faint Very Light Light

CLARITY

IF WS¹⁻² VS¹⁻² SI¹⁻² |¹⁻³

| | | | | |
|------------------------|--------------------------------|---------------------------|----------------------|----------|
| Internally Flawless | Very Very Slightly Included | Very Slightly Included | Slightly Included | Included |
|------------------------|--------------------------------|---------------------------|----------------------|----------|

LABORATORY GROWN DIAMOND REPORT



June 19, 2025

IGI Report Number **LG714503703**Description **LABORATORY GROWN DIAMOND**Shape and Cutting Style **ROUND BRILLIANT**

Measurements 9.31 - 9.35 X 5.60 MM

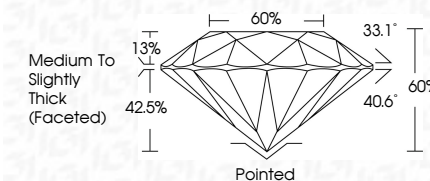
GRADING RESULTS

Carat Weight **3.03 CARATS**

Color Grade

Clarity Grade **VS 2**

Cut Grade **IDEAL**



ADDITIONAL GRADING INFORMATION

Polish **EXCELLENT**Symmetry **EXCELLENT**Fluorescence **NONE**Inscription(s) LG714503703

Comments: This Laboratory Grown Diamond was created by Chemical Vapor Deposition (CVD) growth process.

Type IIa



© IGI 2020, International Gemological Institute

FD - 10 20

www.igi.org



THIS DOCUMENT WAS PRODUCED WITH THE FOLLOWING SECURITY MEASURES: SPECIAL DOCUMENT PAPER, INK SCREENS, WATERMARK, BACKGROUND DESIGNS, HOLOGRAM AND OTHER SECURITY FEATURES NOT LISTED AND DO EXCEED DOCUMENT SECURITY INDUSTRY GUIDELINES

June 19, 2025
GI Report No LG714503703
ROUND BRILLIANT

| | | |
|-----------------------|------------------------------------|--------------|
| 3.31 - 9.35 X 5.60 MM | 3.03 CARATS | D |
| Color Grade | VVS 2 | IDEAL |
| Clarity Grade | 60% | 60% |
| Cut Grade | Medium To Slightly Thick (Faceted) | Pointed |
| Depth | | EXCELLENT |
| Table | | EXCELLENT |
| Grade | | NONE |
| Culet | | Fluorescence |
| Polish | | |
| Symmetry | | |
| Fluorescence | | |

Comments:
This Laboratory Grown Diamond was
created by Chemical Vapor Deposition
(CVD) growth process.