

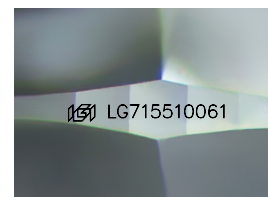
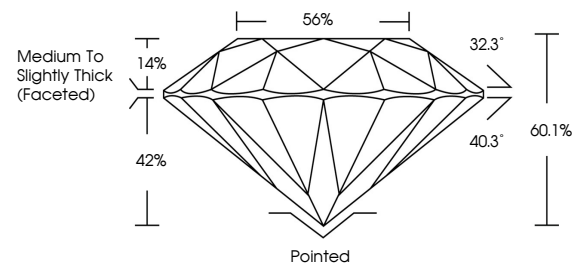


ELECTRONIC COPY

LABORATORY GROWN DIAMOND REPORT

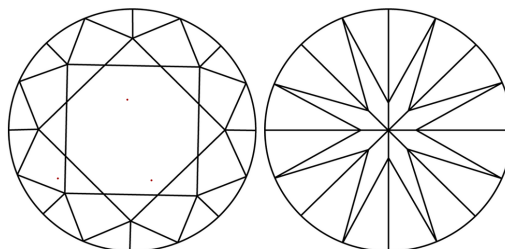
LG715510061
Report verification at igi.org

PROPORTIONS



Sample Image Used

CLARITY CHARACTERISTICS



KEY TO SYMBOLS

Red symbols indicate internal characteristics.
Green symbols indicate external characteristics.

COLOR

D E F G H I J Faint Very Light Light

CLARITY

IF WS¹⁻² VS¹⁻² SI¹⁻² |¹⁻³

Internally Flawless	Very Very Slightly Included	Very Slightly Included	Slightly Included	Included
------------------------	--------------------------------	---------------------------	----------------------	----------



© IGI 2020, International Gemological Institute

FD - 10 20

www.igi.org

LABORATORY GROWN DIAMOND REPORT



June 11, 2025

IGI Report Number **LG715510061**

Description	LABORATORY GROWN DIAMOND
-------------	--------------------------

Shape and Cutting Style **ROUND BRILLIANT**

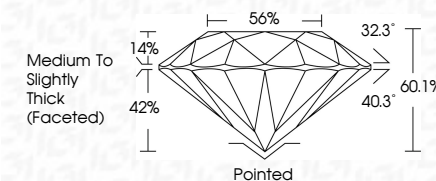
Measurements 10.35 - 10.40 X 6.24 MM

GRADING RESULTS

Carat Weight **4.13 CARATS**

Color Grade **E**Clarity Grade WS 2

Cut Grade **EXCELLENT**



ADDITIONAL GRADING INFORMATION

Polish **EXCELLENT**Symmetry **EXCELLENT**Fluorescence **NONE**Inscription(s) LG715510061

Comments: This Laboratory Grown Diamond was created by Chemical Vapor Deposition (CVD) growth process.

Type IIa



June 11, 2026	GJ Report No.GJ71551001
VIVID BRILLIANT	
10.03 - 10.40 X 6.24 MM	
Color Grade	4.13 CARATS
Clarity Grade	E
Cut Grade	VVS 2
Depth	EXCELLENT
Table	60.1%
Girdle	86%
Medium to Slightly Thick Facet(s)	
Quiet	Pinkish
Polish	EXCELLENT
Symmetry	EXCELLENT
Fluorescence	NONE
Fingerprint(s)	(#) L571551001
Comments:	
	Created by Laboratory Growth Diamond was created by Chemical Vapor Deposition CVD growth process. Type IIA