

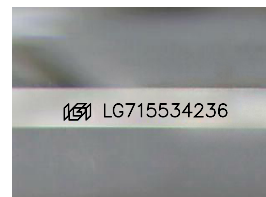
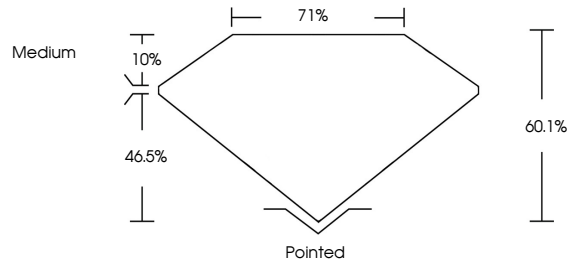


**INTERNATIONAL
GEMOLOGICAL
INSTITUTE**

ELECTRONIC COPY

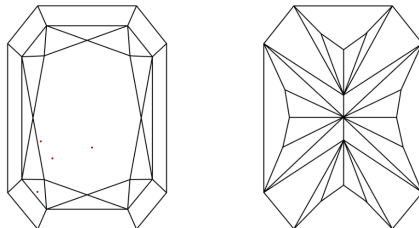
LG715534236
Report verification at igi.org

PROPORTIONS



Sample Image Used

CLARITY CHARACTERISTICS



KEY TO SYMBOLS

Red symbols indicate internal characteristics.
Green symbols indicate external characteristics.

COLOR

D E F G H I J Faint Very Light Light

CLARITY

IF WS¹⁻² VS¹⁻² SI¹⁻² I¹⁻³

Internally Flawless	Very Very Slightly Included	Very Slightly Included	Slightly Included	Included
------------------------	--------------------------------	---------------------------	----------------------	----------

LABORATORY GROWN DIAMOND REPORT



June 11, 2025

IGI Report Number **LG715534236**

Description	LABORATORY GROWN DIAMOND
-------------	--------------------------

Shape and Cutting Style

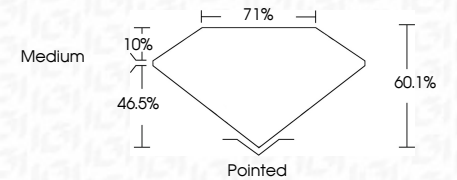
CUT CORNERED
RECTANGULAR MODIFIED
BRILLIANT

Measurements **18.39 X 12.24 X 7.36 MM**

GRADING RESULTS

Carat Weight **14.36 CARATS**

Color Grade	F
-------------	---

Clarity Grade **VVS 2**

ADDITIONAL GRADING INFORMATION

Polish **EXCELLENT**

Symmetry **EXCELLENT**

Fluorescence **NONE**Inscription(s)  LG715534236

Comments: This Laboratory Grown Diamond was created by Chemical Vapor Deposition (CVD) growth process.
Type IIa



IGI



© IGI 2020, International Gemological Institute

FD - 10 20

www.igi.org

THIS DOCUMENT WAS PRODUCED WITH THE FOLLOWING SECURITY MEASURES: SPECIAL DOCUMENT PAPER, INK SCREENS, WATERMARK, BACKGROUND DESIGNS, HOLOGRAM AND OTHER SECURITY FEATURES NOT LISTED AND DO EXCEED DOCUMENT SECURITY INDUSTRY GUIDELINES

June 11, 2026	Carat Weight	18.97 X 12.24 X 7.36 MM	14.36 CARATS	
GI REPORT NO LG715534236	Color Grade			F
CU CUT CORNERED RECT. MODIFIED BRILLIANT	Clarity Grade		VVS 2	
	Depth		60.1%	
	Table		71%	
	Girdle		Medium	
	Culet		Pointed	
	Polish		EXCELLENT	
	Symmetry		EXCELLENT	
	Fluorescence		NONE	
	Inscriptions (1)			691 LG715534236

This Laboratory Grown Diamond was created by Chemical Vapor Deposition (CVD) growth process, type IIa