



**ELECTRONIC COPY**

LG715540511  
Report verification at igi.org



June 20, 2025

IGI Report Number **LG715540511**

Description **LABORATORY GROWN DIAMOND**

Shape and Cutting Style **ROUND BRILLIANT**

Measurements **7.37 - 7.42 X 4.50 MM**

**GRADING RESULTS**

Carat Weight **1.51 CARAT**

Color Grade **FANCY LIGHT PINK**

Clarity Grade **VVS 1**

Cut Grade **IDEAL**

June 20, 2025

IGI Report Number **LG715540511**

Description **LABORATORY GROWN DIAMOND**

Shape and Cutting Style **ROUND BRILLIANT**

Measurements **7.37 - 7.42 X 4.50 MM**

**GRADING RESULTS**

Carat Weight **1.51 CARAT**

Color Grade **FANCY LIGHT PINK**

Clarity Grade **VVS 1**

Cut Grade **IDEAL**

**ADDITIONAL GRADING INFORMATION**

Polish **EXCELLENT**

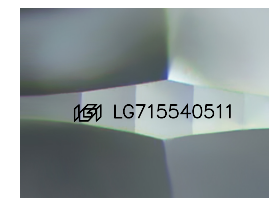
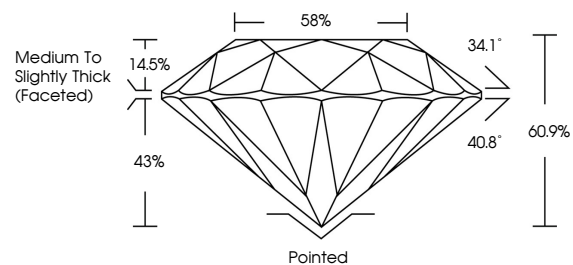
Symmetry **EXCELLENT**

Fluorescence **STRONG**

Inscription(s) **LG715540511**

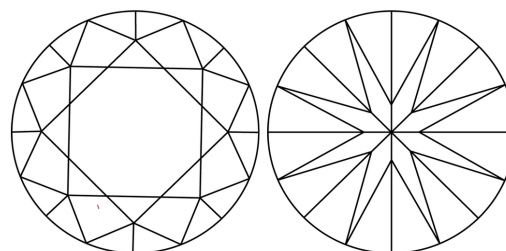
Comments: This Laboratory Grown Diamond was created by High Pressure High Temperature (HPHT) growth process. Indications of post-growth treatment.

**PROPORTIONS**



Sample Image Used

**CLARITY CHARACTERISTICS**



**KEY TO SYMBOLS**

Red symbols indicate internal characteristics.  
Green symbols indicate external characteristics.

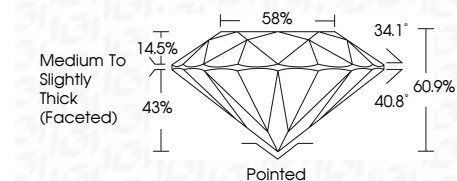
**COLOR**

D E F G H I J Faint Very Light Light

**CLARITY**

IF VS<sup>1-2</sup> VS<sup>1-2</sup> SI<sup>1-2</sup> I<sup>1-3</sup>

Internally Flawless Very Very Slightly Included Very Slightly Included Slightly Included Included



**ADDITIONAL GRADING INFORMATION**

Polish **EXCELLENT**

Symmetry **EXCELLENT**

Fluorescence **STRONG**

Inscription(s) **LG715540511**

Comments: This Laboratory Grown Diamond was created by High Pressure High Temperature (HPHT) growth process. Indications of post-growth treatment.



**IGI**



|                 |                           |             |                  |           |       |       |        |                                    |         |           |           |              |                |
|-----------------|---------------------------|-------------|------------------|-----------|-------|-------|--------|------------------------------------|---------|-----------|-----------|--------------|----------------|
| June 20, 2025   | IGI Report No LG715540511 | 1.51 CARAT  | FANCY LIGHT PINK | VVS 1     | IDEAL | 60.9% | 58%    | Medium To Slightly Thick (Faceted) | Pointed | EXCELLENT | EXCELLENT | STRONG       | LG715540511    |
| ROUND BRILLIANT | 7.37 - 7.42 X 4.50 MM     | Color Grade | Clarity Grade    | Cut Grade | Depth | Table | Girdle |                                    |         | Polish    | Symmetry  | Fluorescence | Inscription(s) |

Comments: This Laboratory Grown Diamond was created by High Pressure High Temperature (HPHT) growth process. Indications of post-growth treatment.