



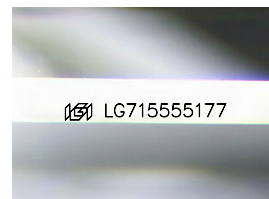
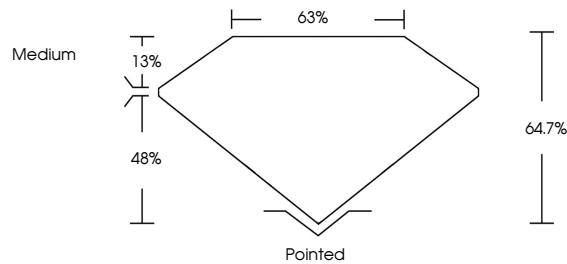
**INTERNATIONAL  
GEMOLOGICAL  
INSTITUTE**

**ELECTRONIC COPY**

## LABORATORY GROWN DIAMOND REPORT

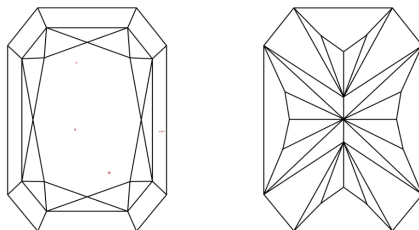
LG715555177  
Report verification at [igi.org](https://igi.org)

## PROPORTIONS



Sample Image Used

## CLARITY CHARACTERISTICS



## KEY TO SYMBOLS

Red symbols indicate internal characteristics.  
Green symbols indicate external characteristics.

**COLOR**

D E F G H I J Faint Very Light Light

## CLARITY

IF      WS<sup>1-2</sup>      VS<sup>1-2</sup>      S<sup>1-2</sup>      1-3

Internally Flawless	Very Very Slightly Included	Very Slightly Included	Slightly Included	Included
------------------------	--------------------------------	---------------------------	----------------------	----------



© IGI 2020, International Gemological Institute

FD - 10 20

**www.igi.org**



THIS DOCUMENT WAS PRODUCED WITH THE FOLLOWING SECURITY MEASURES: SPECIAL DOCUMENT PAPER, INK SCREENS, WATERMARK BACKGROUND DESIGNS, HOLOGRAM AND OTHER SECURITY FEATURES NOT LISTED AND DO EXCEED DOCUMENT SECURITY INDUSTRY GUIDELINES.

## LABORATORY GROWN DIAMOND REPORT



June 16, 2025

IGI Report Number **LG715555177**

Description	LABORATORY GROWN DIAMOND
-------------	--------------------------

Shape and Cutting Style

Measurements **10.64 X 7.14 X 4.62 MM**

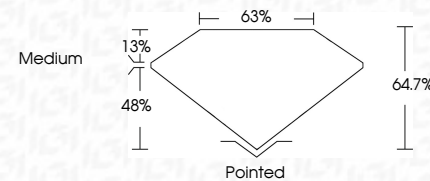
## GRADING RESULTS

Carat Weight **3.15 CARATS**

Color Grade	F
-------------	---

Clarity Grade VS 1

Cut Grade **EXCELLENT**



### ADDITIONAL GRADING INFORMATION

Polish **EXCELLENT**Symmetry **EXCELLENT**Fluorescence **NONE**Inscription(s)  LG715555177

Comments: This Laboratory Grown Diamond was created by Chemical Vapor Deposition (CVD) growth process.  
Type IIa



IG

June 16, 2025	IGI Report No LG71555177
CUT CORNERED RECT. MODIFIED BRILLIANT	
10.64 X 7.14 X 4.62 MM	3.18 CARATS
Carat Weight	F
Color Grade	VS 1
Clarity Grade	EXCELLENT
Cut Grade	64.7%
Depth	65%
Table	Medium
Girdle	Ported
Culet	EXCELLENT
Polish	EXCELLENT
Symmetry	EXCELLENT
Fluorescence	NONE
Inclusion(s)	1001 LG71555177
Comments:	
This is a Chemically Grown Diamond was created by Chemical Vapor Deposition (CVD) growth process.	
Type Ila	