

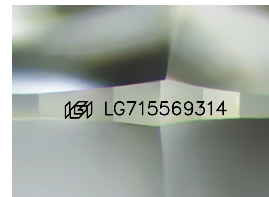
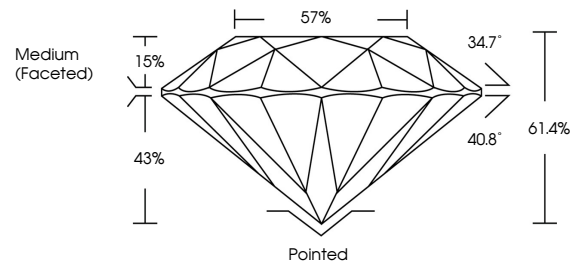


**INTERNATIONAL  
GEMOLOGICAL  
INSTITUTE**

**ELECTRONIC COPY**

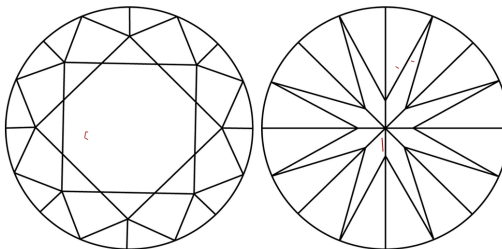
LG715569314  
Report verification at [igv.org](https://igv.org)

## PROPORTIONS



Sample Image Used

## CLARITY CHARACTERISTICS



## KEY TO SYMBOLS

Red symbols indicate internal characteristics.  
Green symbols indicate external characteristics.

**COLOR**

D E F G H I J Faint Very Light Light

## CLARITY

IF      WS<sup>1-2</sup>      VS<sup>1-2</sup>      SI<sup>1-2</sup>      |<sup>1-3</sup>

Internally Flawless	Very Very Slightly Included	Very Slightly Included	Slightly Included	Included
------------------------	--------------------------------	---------------------------	----------------------	----------



© IGI 2020, International Gemological Institute

FD - 10 20

**www.igi.org**

THIS DOCUMENT WAS PRODUCED WITH THE FOLLOWING SECURITY MEASURES: SPECIAL DOCUMENT PAPER, INK SCREENS, WATERMARK, BACKGROUND DESIGNS, HOLOGRAM AND OTHER SECURITY FEATURES NOT LISTED AND DO EXCEED DOCUMENT SECURITY INDUSTRY GUIDELINES

LABORATORY GROWN DIAMOND REPORT



July 4, 2025

IGI Report Number **LG715569314**

Description	LABORATORY GROWN DIAMOND
-------------	--------------------------

Shape and Cutting Style **ROUND BRILLIANT**

Measurements 10.14 - 10.21 X 6.25 MM

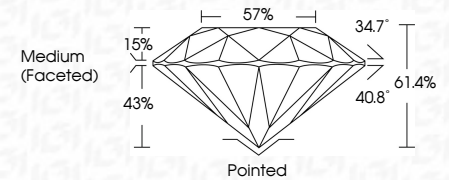
## GRADING RESULTS

Carat Weight **4.00 CARATS**

Color Grade	E
-------------	---

Clarity Grade **VS 1**

Cut Grade **IDEAL**



### ADDITIONAL GRADING INFORMATION

Polish **EXCELLENT**Symmetry **EXCELLENT**Fluorescence **NONE**Inscription(s)  LG715569314

Comments: This Laboratory Grown Diamond was created by Chemical Vapor Deposition (CVD) growth process.  
Type IIa



IGI

JULY 4, 2025 IGI Report No. LG71556914 ROUND BRILLIANT	10.14 - 10.21 X 6.25 MM Carat Weight Color Grade Clarity Grade Cut Grade Depth Table Girdle Medium (Faceted)	4.00 CARATS E VS 1 IDEAL 61.6% 57% Medium (Faceted)	Pointed EXCELLENT EXCELLENT NONE (6) LG71556914	Comments: This Laboratory Grown Diamond was created by Chemical Vapor Deposition (CVD) growth process. type IId
--	--	---	---	---