



**INTERNATIONAL
GEMOLOGICAL
INSTITUTE**

ELECTRONIC COPY

LG715570534
Report verification at igi.org

LABORATORY GROWN DIAMOND REPORT



June 23, 2025

IGI Report Number **LG715570534**

Description	LABORATORY GROWN DIAMOND
-------------	--------------------------

Shape and Cutting Style **ROUND BRILLIANT**

Measurements 10.17 - 10.24 X 6.25 MM

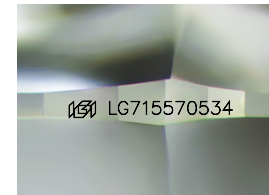
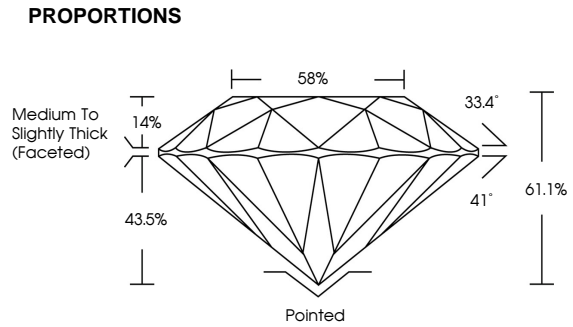
GRADING RESULTS

Carat Weight **4.03 CARATS**

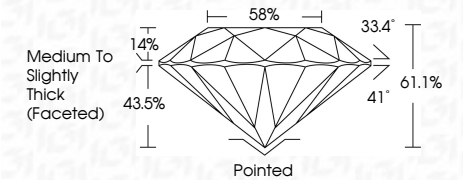
Color Grade	E
-------------	---

Clarity Grade **VVS 2**

Cut Grade **IDEAL**



Sample Image Used



COLOR

D E F G H I J Faint Very Light Light

CLARITY

IF WS¹⁻² VS¹⁻² SI¹⁻² I¹⁻³

Internally Flawless	Very Very Slightly Included	Very Slightly Included	Slightly Included	Included
------------------------	--------------------------------	---------------------------	----------------------	----------



© IGI 2020, International Gemological Institute

FD - 10 20



THIS DOCUMENT WAS PRODUCED WITH THE FOLLOWING SECURITY MEASURES: SPECIAL DOCUMENT PAPER, INK SCREENS, WATERMARK BACKGROUND DESIGNS, HOLOGRAM AND OTHER SECURITY FEATURES NOT LISTED AND DO EXCEED DOCUMENT SECURITY INDUSTRY GUIDELINES



IGI

June 28, 2026	Carat Weight	4.03 CARATS
GI Report No. G71570334	Color Grade	E
ROUND BRILLIANT	Clarity Grade	VVS 2
	Depth	IDEAL
	Table	61.1%
	Girdle	59%
	Medium to Slightly Thick (excellent)	
	Culet	Pointed
	Polish	EXCELLENT
	Symmetry	EXCELLENT
	Fluorescence	NONE
	Inscription(s)	1691 LG71570334
	Comments:	This Laboratory Grown Diamond was created by Chemical Vapor Deposition (CVD) growth process.
	Type IIA	