

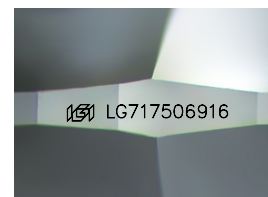
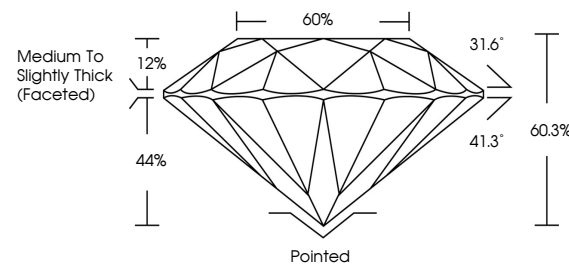


ELECTRONIC COPY

LABORATORY GROWN DIAMOND REPORT

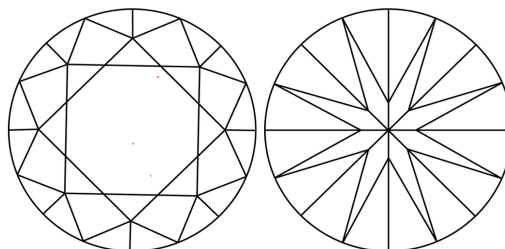
LG717506916
Report verification at igi.org

PROPORTIONS



Sample Image Used

CLARITY CHARACTERISTICS



KEY TO SYMBOLS

Red symbols indicate internal characteristics.
Green symbols indicate external characteristics.

COLOR

D E F G H I J Faint Very Light Light

CLARITY

IF WS¹⁻² VS¹⁻² SI¹⁻² |¹⁻³

Internally Flawless	Very Very Slightly Included	Very Slightly Included	Slightly Included	Included
------------------------	--------------------------------	---------------------------	----------------------	----------

LABORATORY GROWN DIAMOND REPORT



June 16, 2025

IGI Report Number **LG717506916**Description **LABORATORY GROWN DIAMOND**Shape and Cutting Style **ROUND BRILLIANT**

Measurements 12.34 - 12.40 X 7.45 MM

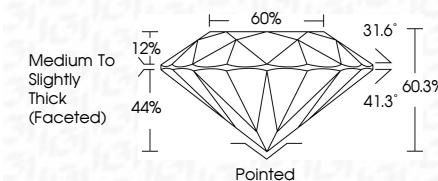
GRADING RESULTS

Carat Weight **7.00 CARATS**

Color Grade E

Clarity Grade VS 1

Cut Grade **EXCELLENT**



ADDITIONAL GRADING INFORMATION

Polish **EXCELLENT**Symmetry **EXCELLENT**Fluorescence **NONE**Inscription(s) LG717506916

Comments: This Laboratory Grown Diamond was created by Chemical Vapor Deposition (CVD) growth process.

Type IIa



© IGI 2020, International Gemological Institute

FD - 10 20



THIS DOCUMENT WAS PRODUCED WITH THE FOLLOWING SECURITY MEASURES: SPECIAL DOCUMENT PAPER, INK SCREENS, WATERMARK, BACKGROUND DESIGNS, HOLOGRAM AND OTHER SECURITY FEATURES NOT LISTED AND DO EXCEED DOCUMENT SECURITY INDUSTRY GUIDELINES

www.igi.org

June 16, 2025	GI Report No. G17750916	7.00 CARATS	NONE	Pointed	Comments: This Laboratory Grown Diamond was created by Chemical Vapor Deposition (CVD) growth process. Type IIA
ROUND BRILLIANT			VS 1	Excellent	
			60.3%	Excellent	
			60%	Excellent	
			Medium to Slightly Thick (graded)	NONE	
12.34 - 12.40 X 7.45 MM				1691 G17750916	
Carat Weight	Color Grade	Clarity Grade	Cut Grade	Polish	Symmetry
				Fluorescence	Inscription(s)