

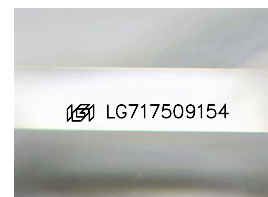
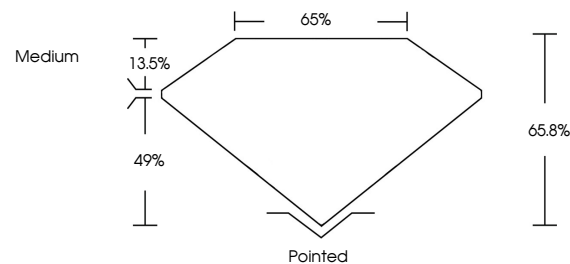


**ELECTRONIC COPY**

## LABORATORY GROWN DIAMOND REPORT

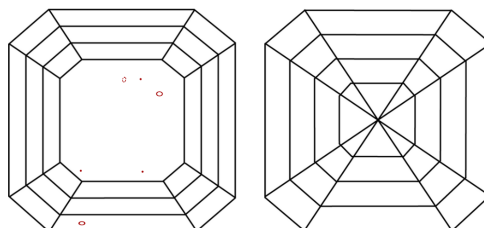
LG717509154  
Report verification at [igi.org](https://igi.org)

## PROPORTIONS



Sample Image Used

## CLARITY CHARACTERISTICS



## KEY TO SYMBOLS

Red symbols indicate internal characteristics.  
Green symbols indicate external characteristics.

## COLOR

D E F G H I J Faint Very Light Light

## CLARITY

IF      VWS<sup>1-2</sup>      VS<sup>1-2</sup>      SI<sup>1-2</sup>      I<sup>1-3</sup>

Internally Flawless	Very Very Slightly Included	Very Slightly Included	Slightly Included	Included
---------------------	-----------------------------	------------------------	-------------------	----------

## LABORATORY GROWN DIAMOND REPORT



June 19, 2025

IGI Report Number **LG717509154**Description **LABORATORY GROWN DIAMOND**

Shape and Cutting Style **SQUARE EMERALD CUT**

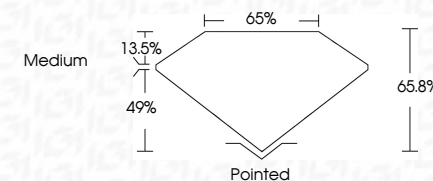
Measurements **6.49 X 6.46 X 4.25 MM**

## GRADING RESULTS

Carat Weight **1.59 CARAT**

Color Grade **G**

Clarity Grade VS 2



### ADDITIONAL GRADING INFORMATION

Polish EXCELLENT

Symmetry **EXCELLENT**Fluorescence NONIInscription(s)  LG717509154

Comments: This Laboratory Grown Diamond was created by Chemical Vapor Deposition (CVD) growth process.  
Type IIa



**www.igi.org**

© IGI 2020, International Gemological Institute

FD - 10 20



THIS DOCUMENT WAS PRODUCED WITH THE FOLLOWING SECURITY MEASURES: SPECIAL DOCUMENT PAPER, INK SCREENS, WATERMARK, BACKGROUND DESIGNS, HOLOGRAM AND OTHER SECURITY FEATURES NOT LISTED AND DO EXCEED DOCUMENT SECURITY INDUSTRY GUIDELINE

June 19, 2025  
GI Report No LG717509154  
SQUARE EMERALD CUT

	1.59 CARAT		Color Weight		Color Grade
	VS 2		Clarity Grade		
	65.8%		Depth		
	65%		Table		
	Medium		Girdle		
Pointed	Culet				
EXCELLENT	Polish				
EXCELLENT	Symmetry				
NONE	Fluorescence				
4mm   (571-750)1541					

**Comments:**  
This Laboratory Grown Diamond was  
created by Chemical Vapor Deposition  
(CVD) growth process.