



INTERNATIONAL GEMOLOGICAL INSTITUTE

ELECTRONIC COPY



June 19, 2025

IGI Report Number LG717511518
ROUND BRILLIANT
LABORATORY GROWN DIAMOND
4.21 - 4.25 X 2.73 MM

Carat Weight 0.30 CARAT
Color Grade D
Clarity Grade VS 1
Cut Grade VERY GOOD
Polish VERY GOOD
Symmetry VERY GOOD
Fluorescence NONE
Inscription(s) IGI LG717511518

Comments: This Laboratory Grown Diamond was created by Chemical Vapor Deposition (CVD) growth process. Type Ila

LABORATORY GROWN DIAMOND REPORT

June 19, 2025
IGI Report Number LG717511518
Description LABORATORY GROWN DIAMOND
Shape and Cutting Style ROUND BRILLIANT
Measurements 4.21 - 4.25 X 2.73 MM

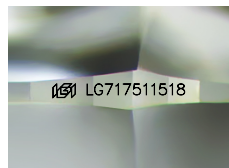
GRADING RESULTS

Carat Weight 0.30 CARAT
Color Grade D
Clarity Grade VS 1
Cut Grade VERY GOOD

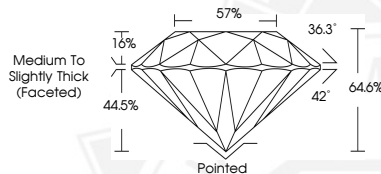
ADDITIONAL GRADING INFORMATION

Polish VERY GOOD
Symmetry VERY GOOD
Fluorescence NONE
Inscription(s) IGI LG717511518

Comments: This Laboratory Grown Diamond was created by Chemical Vapor Deposition (CVD) growth process. Type Ila



Sample Image Used



June 19, 2025

IGI Report Number LG717511518
ROUND BRILLIANT
LABORATORY GROWN DIAMOND
4.21 - 4.25 X 2.73 MM

Carat Weight 0.30 CARAT
Color Grade D
Clarity Grade VS 1
Cut Grade VERY GOOD
Polish VERY GOOD
Symmetry VERY GOOD
Fluorescence NONE
Inscription(s) IGI LG717511518

Comments: This Laboratory Grown Diamond was created by Chemical Vapor Deposition (CVD) growth process. Type Ila



THIS DOCUMENT WAS PRODUCED WITH THE FOLLOWING SECURITY MEASURES: SPECIAL DOCUMENT PAPER, INK SCREENS, WATERMARK, BACKGROUND DESIGNS, HOLOGRAM AND OTHER SECURITY FEATURES NOT LISTED AND DO EXCEED DOCUMENT SECURITY INDUSTRY GUIDELINES.

For terms & conditions and to verify this report, please visit www.igi.org