



INTERNATIONAL GEMOLOGICAL INSTITUTE

ELECTRONIC COPY

LABORATORY GROWN DIAMOND REPORT

June 18, 2025
IGI Report Number **LG717511536**
Description **LABORATORY GROWN DIAMOND**
Shape and Cutting Style **MARQUISE BRILLIANT**
Measurements **7.39 X 3.60 X 2.37 MM**

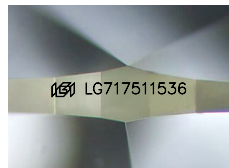
GRADING RESULTS

Carat Weight **0.35 CARAT**
Color Grade **E**
Clarity Grade **VS 1**

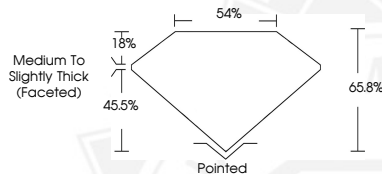
ADDITIONAL GRADING INFORMATION

Polish **VERY GOOD**
Symmetry **VERY GOOD**
Fluorescence **NONE**
Inscription(s) **IGI LG717511536**

Comments: This Laboratory Grown Diamond was created by Chemical Vapor Deposition (CVD) growth process. Type IIa



Sample Image Used



June 18, 2025
IGI Report Number **LG717511536**
MARQUISE BRILLIANT
LABORATORY GROWN DIAMOND
7.39 X 3.60 X 2.37 MM
Carat Weight **0.35 CARAT**
Color Grade **E**
Clarity Grade **VS 1**
Polish **VERY GOOD**
Symmetry **VERY GOOD**
Fluorescence **NONE**
Inscription(s) **IGI LG717511536**
Comments: This Laboratory Grown Diamond was created by Chemical Vapor Deposition (CVD) growth process. Type IIa



June 18, 2025
IGI Report Number **LG717511536**
MARQUISE BRILLIANT
LABORATORY GROWN DIAMOND
7.39 X 3.60 X 2.37 MM
Carat Weight **0.35 CARAT**
Color Grade **E**
Clarity Grade **VS 1**
Polish **VERY GOOD**
Symmetry **VERY GOOD**
Fluorescence **NONE**
Inscription(s) **IGI LG717511536**
Comments: This Laboratory Grown Diamond was created by Chemical Vapor Deposition (CVD) growth process. Type IIa



THIS DOCUMENT WAS PRODUCED WITH THE FOLLOWING SECURITY MEASURES: SPECIAL DOCUMENT PAPER, INK SCREENS, WATERMARK, BACKGROUND DESIGNS, HOLOGRAM AND OTHER SECURITY FEATURES NOT LISTED AND DO EXCEED DOCUMENT SECURITY INDUSTRY GUIDELINES.

For terms & conditions and to verify this report, please visit www.igi.org