

**ELECTRONIC COPY**

## LABORATORY GROWN DIAMOND REPORT

|                         |                          |
|-------------------------|--------------------------|
| June 17, 2025           |                          |
| IGI Report Number       | LG717515528              |
| Description             | LABORATORY GROWN DIAMOND |
| Shape and Cutting Style | ROUND BRILLIANT          |
| Measurements            | 6.41 - 6.44 X 3.94 MM    |

## GRADING RESULTS

|               |            |
|---------------|------------|
| Carat Weight  | 1.00 CARAT |
| Color Grade   | F          |
| Clarity Grade | VVS 1      |
| Cut Grade     | IDEAL      |

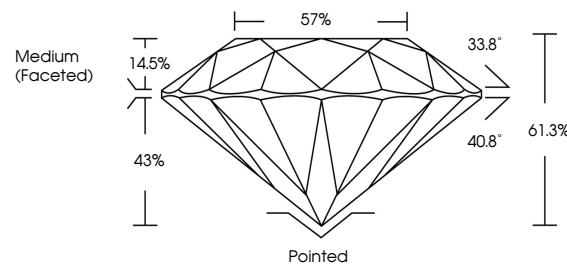
### ADDITIONAL GRADING INFORMATION

|                |   |
|----------------|---|
| Polish         | EXCELLENT   |
| Symmetry       | EXCELLENT   |
| Fluorescence   | NONE  |
| Inscription(s) |  LG717515528 |

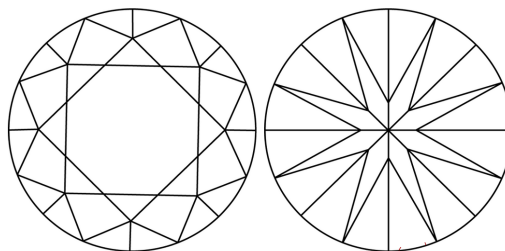
Comments: As Grown - No indication of post-growth treatment.  
This Laboratory Grown Diamond was created by High Pressure High Temperature (HPHT) growth process.  
Type II

LG717515528  
Report verification at [igi.org](https://igi.org)

## PROPORTIONS

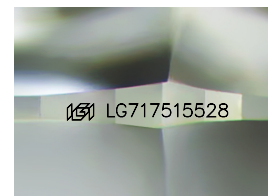


## CLARITY CHARACTERISTICS



## KEY TO SYMBOLS

Red symbols indicate internal characteristics.  
Green symbols indicate external characteristics.



Sample Image Used

**COLOR**

D E F G H I J Faint Very Light Light

## CLARITY

IF                      VS<sup>1-2</sup>                      VS<sup>1-2</sup>                      SI<sup>1-2</sup>                      |<sup>1-3</sup>

|                        |                                |                           |                      |          |
|------------------------|--------------------------------|---------------------------|----------------------|----------|
| Internally<br>Flawless | Very Very<br>Slightly Included | Very<br>Slightly Included | Slightly<br>Included | Included |
|------------------------|--------------------------------|---------------------------|----------------------|----------|

## LABORATORY GROWN DIAMOND REPORT



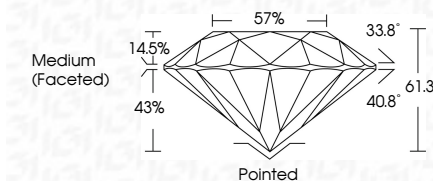
|                         |                          |
|-------------------------|--------------------------|
| June 17, 2025           |                          |
| IGI Report Number       | LG717515528              |
| Description             | LABORATORY GROWN DIAMOND |
| Shape and Cutting Style | ROUND BRILLIANT          |
| Measurements            | 6.41 - 6.44 X 3.94 MM    |

## GRADING RESULTS

|               |            |
|---------------|------------|
| Carat Weight  | 1.00 CARAT |
| Color Grade   | F          |
| Clarity Grade | VVS 1      |
| Cut Grade     | IDEAL      |

### ADDITIONAL GRADING INFORMATION

|  |                            |
|--|----------------------------|
| Polish   | EXCELLENT                  |
| Symmetry   | EXCELLENT                  |
| Fluorescence   | NONE                       |
| Inscription(s)   | <del>161</del> LG717515528 |
| Comments: As Grown - No indication of post-growth treatment.                                       |                            |
| This Laboratory Grown Diamond was created by High Pressure High Temperature (HPHT) growth process. |                            |
| Type II  |                            |



IG



June 17, 2025  
IGI Report No LG717515528  
ROUND BRILLIANT

|                       |              |                  |
|-----------------------|--------------|------------------|
| 6.41 - 6.44 X 3.94 MM | Carat Weight | 1.00 CARAT       |
| Color Grade           |              | F                |
| Clarity Grade         |              | VVS 1            |
| Cut Grade             |              | IDEAL            |
| Depth                 |              | 61.3%            |
| Table                 |              | 57%              |
| Grade                 |              | Medium (Faceted) |
| Culet                 |              | Pointed          |
| Polish                |              | EXCELLENT        |
| Symmetry              |              | EXCELLENT        |
| Fluorescence          |              | NONE             |
| Fluorescence          |              | 4441 15717115708 |

**Comments:**  
As Grown - No indication of post-growth treatment.  
This Laboratory Grown Diamond was created by High Pressure High Temperature (HPHT) growth process.