



ELECTRONIC COPY

LG717520847
Report verification at igi.org



July 8, 2025
IGI Report Number **LG717520847**
Description **LABORATORY GROWN DIAMOND**
Shape and Cutting Style **PRINCESS CUT**
Measurements **9.73 X 9.43 X 6.80 MM**
GRADING RESULTS
Carat Weight **5.47 CARATS**
Color Grade **E**
Clarity Grade **VVS 2**

July 8, 2025
IGI Report Number **LG717520847**
Description **LABORATORY GROWN DIAMOND**
Shape and Cutting Style **PRINCESS CUT**
Measurements **9.73 X 9.43 X 6.80 MM**

GRADING RESULTS

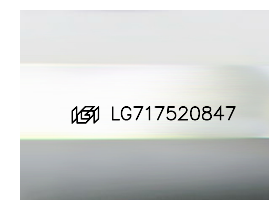
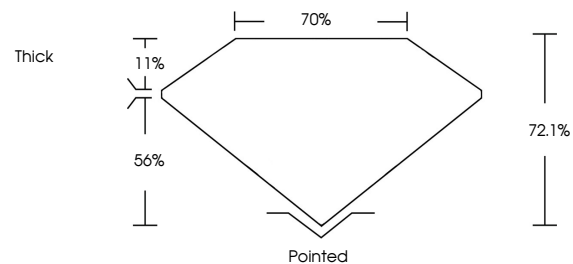
Carat Weight **5.47 CARATS**
Color Grade **E**
Clarity Grade **VVS 2**

ADDITIONAL GRADING INFORMATION

Polish **EXCELLENT**
Symmetry **EXCELLENT**
Fluorescence **NONE**
Inscription(s) **IGI LG717520847**

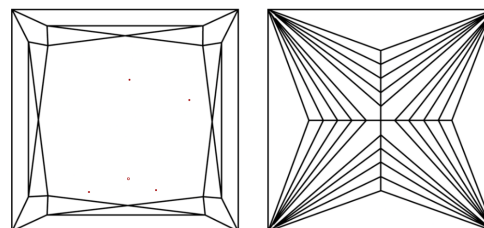
Comments: This Laboratory Grown Diamond was created by Chemical Vapor Deposition (CVD) growth process.
Type IIa

PROPORTIONS



Sample Image Used

CLARITY CHARACTERISTICS



KEY TO SYMBOLS

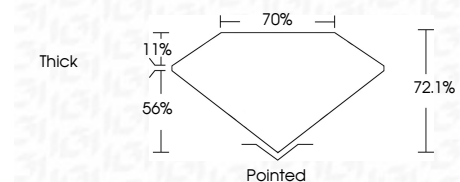
Red symbols indicate internal characteristics.
Green symbols indicate external characteristics.

COLOR

D E F G H I J Faint Very Light Light

CLARITY

IF	VS ¹⁻²	VS ¹⁻²	SI ¹⁻²	I ¹⁻³
Internally Flawless	Very Very Slightly Included	Very Slightly Included	Slightly Included	Included



ADDITIONAL GRADING INFORMATION

Polish **EXCELLENT**
Symmetry **EXCELLENT**
Fluorescence **NONE**
Inscription(s) **IGI LG717520847**
Comments: This Laboratory Grown Diamond was created by Chemical Vapor Deposition (CVD) growth process.
Type IIa



IGI



July 8, 2025
IGI Report No LG717520847
PRINCESS CUT
9.73 X 9.43 X 6.80 MM
5.47 CARATS
E
VVS 2
72.1%
70%
Thick
Pointed
EXCELLENT
EXCELLENT
NONE
IGI LG717520847

Comments: This Laboratory Grown Diamond was created by Chemical Vapor Deposition (CVD) growth process.
Type IIa