

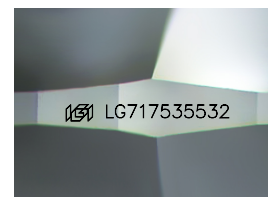
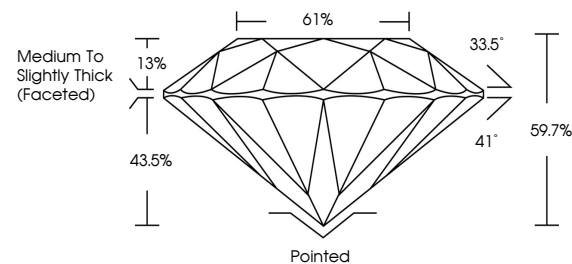


**ELECTRONIC COPY**

## LABORATORY GROWN DIAMOND REPORT

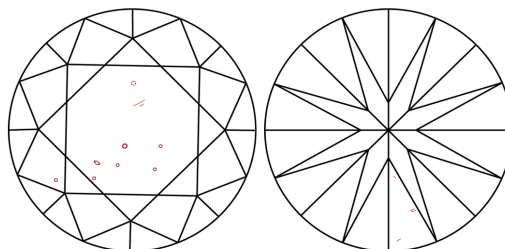
LG717535532  
Report verification at [igi.org](https://igi.org)

## PROPORTIONS



Sample Image Used

## CLARITY CHARACTERISTICS



### KEY TO SYMBOLS

Red symbols indicate internal characteristics.  
Green symbols indicate external characteristics.

## COLOR

D E F G H I J Faint Very Light Light

## CLARITY

IF WS<sup>1-2</sup> VS<sup>1-2</sup> SI<sup>1-2</sup> |<sup>1-3</sup>

Internally Flawless	Very Very Slightly Included	Very Slightly Included	Slightly Included	Included
------------------------	--------------------------------	---------------------------	----------------------	----------

## LABORATORY GROWN DIAMOND REPORT



June 19, 2025

IGI Report Number **LG717535532**

Description	LABORATORY GROWN DIAMOND
-------------	--------------------------

Shape and Cutting Style **ROUND BRILLIANT**

Measurements 8.11 - 8.16 X 4.85 MM

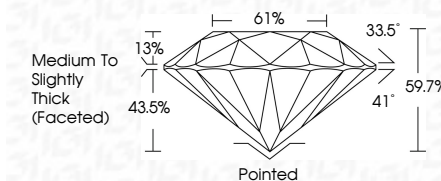
## GRADING RESULTS

Carat Weight **1.94 CARAT**

Color Grade D

Clarity Grade SI 1

Cut Grade **EXCELLENT**



### ADDITIONAL GRADING INFORMATION

Polish **EXCELLENT**Symmetry **EXCELLENT**Fluorescence **NONE**Inscription(s)  LG717535532

Comments: This Laboratory Grown Diamond was created by Chemical Vapor Deposition (CVD) growth process.  
Type IIa



© IGI 2020, International Gemological Institute

FD - 10 20



THIS DOCUMENT WAS PRODUCED WITH THE FOLLOWING SECURITY MEASURES: SPECIAL DOCUMENT PAPER, INK SCREENS, WATERMARK, BACKGROUND DESIGNS, HOLOGRAM, AND OTHER SECURITY FEATURES NOT LISTED AND DO EXCEED DOCUMENT SECURITY INDUSTRY GUIDELINES.

**www.igi.org**

June 19, 2025	Color Weight	1/4 CARAT
GI Report No. LG71753552	Color Grade	D
ROUND BRILLIANT	Clarity Grade	S I
	Clarity	EXCELLENT
	Cur Grade	59.7%
	Depth	61%
	Table	Medium To Slightly Thick (rounded)
	Girdle	
	Culet	Pointed
	Polish	EXCELLENT
	Symmetry	EXCELLENT
	Fluorescence	NONE
	Inscription(s)	lg9 LG71753552
	Comments:	
		This Laboratory Grown Diamond was created by Chemical Vapor Deposition (CVD) growth process.
		Type IIA