



**INTERNATIONAL
GEMOLOGICAL
INSTITUTE**

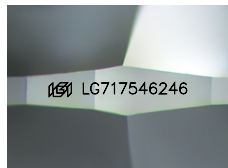
ELECTRONIC COPY



June 19, 2025
IGI Report Number LG717546246
**ROUND BRILLIANT
LABORATORY GROWN DIAMOND**
5.28 - 5.36 X 3.32 MM
 Carat Weight **0.57 CARAT**
 Color Grade **D**
 Clarity Grade **VVS 2**
 Cut Grade **EXCELLENT**
 Polish **EXCELLENT**
 Symmetry **EXCELLENT**
 Fluorescence **NONE**
 Inscription(s) **IGI LG717546246**

LABORATORY GROWN DIAMOND REPORT

June 19, 2025
 IGI Report Number **LG717546246**
 Description **LABORATORY GROWN DIAMOND**
 Shape and Cutting Style **ROUND BRILLIANT**
 Measurements **5.28 - 5.36 X 3.32 MM**



Sample Image Used

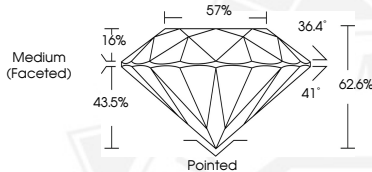
GRADING RESULTS

Carat Weight **0.57 CARAT**
 Color Grade **D**
 Clarity Grade **VVS 2**
 Cut Grade **EXCELLENT**

ADDITIONAL GRADING INFORMATION

Polish **EXCELLENT**
 Symmetry **EXCELLENT**
 Fluorescence **NONE**
 Inscription(s) **IGI LG717546246**

Comments: This Laboratory Grown Diamond was created by Chemical Vapor Deposition (CVD) growth process. Type IIa



June 19, 2025
IGI Report Number LG717546246
**ROUND BRILLIANT
LABORATORY GROWN DIAMOND**
5.28 - 5.36 X 3.32 MM
 Carat Weight **0.57 CARAT**
 Color Grade **D**
 Clarity Grade **VVS 2**
 Cut Grade **EXCELLENT**
 Polish **EXCELLENT**
 Symmetry **EXCELLENT**
 Fluorescence **NONE**
 Inscription(s) **IGI LG717546246**

Comments: This Laboratory Grown Diamond was created by Chemical Vapor Deposition (CVD) growth process. Type IIa

THIS DOCUMENT WAS PRODUCED WITH THE FOLLOWING SECURITY MEASURES: SPECIAL DOCUMENT PAPER, INK SCREENS, WATERMARK, BACKGROUND DESIGN, HOLOGRAM AND OTHER SECURITY FEATURES NOT LISTED AND DO EXCEED DOCUMENT SECURITY INDUSTRY GUIDELINES.

For terms & conditions and to verify this report, please visit www.igi.org