



**INTERNATIONAL
GEMOLOGICAL
INSTITUTE**

ELECTRONIC COPY

LABORATORY GROWN DIAMOND REPORT

June 27, 2025
 IGI Report Number **LG717548474**
 Description **LABORATORY GROWN DIAMOND**
 Shape and Cutting Style **OVAL BRILLIANT**
 Measurements **8.09 X 5.36 X 3.35 MM**

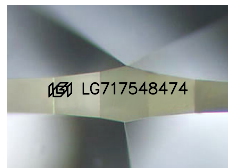
GRADING RESULTS

Carat Weight **0.93 CARAT**
 Color Grade **FANCY VIVID PINK**
 Clarity Grade **VS 1**

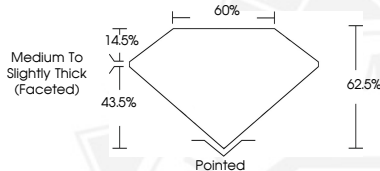
ADDITIONAL GRADING INFORMATION

Polish **EXCELLENT**
 Symmetry **EXCELLENT**
 Fluorescence **STRONG**
 Inscription(s) **IGI LG717548474**

Comments: This Laboratory Grown Diamond was created by Chemical Vapor Deposition (CVD) growth process. Indications of post-growth treatment.



Sample Image Used



June 27, 2025
 IGI Report Number **LG717548474**
OVAL BRILLIANT
LABORATORY GROWN DIAMOND
8.09 X 5.36 X 3.35 MM
 Carat Weight **0.93 CARAT**
 Color Grade **FANCY VIVID PINK**
 Clarity Grade **VS 1**
 Polish **EXCELLENT**
 Symmetry **EXCELLENT**
 Fluorescence **STRONG**
 Inscription(s) **IGI LG717548474**

Comments: This Laboratory Grown Diamond was created by Chemical Vapor Deposition (CVD) growth process. Indications of post-growth treatment.



June 27, 2025
 IGI Report Number **LG717548474**
OVAL BRILLIANT
LABORATORY GROWN DIAMOND
8.09 X 5.36 X 3.35 MM
 Carat Weight **0.93 CARAT**
 Color Grade **FANCY VIVID PINK**
 Clarity Grade **VS 1**
 Polish **EXCELLENT**
 Symmetry **EXCELLENT**
 Fluorescence **STRONG**
 Inscription(s) **IGI LG717548474**

Comments: This Laboratory Grown Diamond was created by Chemical Vapor Deposition (CVD) growth process. Indications of post-growth treatment.

THIS DOCUMENT WAS PRODUCED WITH THE FOLLOWING SECURITY MEASURES: SPECIAL DOCUMENT PAPER, INK SCREENS, WATERMARK, BACKGROUND DESIGN, HOLOGRAM AND OTHER SECURITY FEATURES NOT LISTED AND DO EXCEED DOCUMENT SECURITY INDUSTRY GUIDELINES.

For terms & conditions and to verify this report, please visit www.igi.org